

Anti-ALDH1B1 Antibody
Rabbit polyclonal antibody to ALDH1B1
Catalog # AP59479**Specification**

Anti-ALDH1B1 Antibody - Product Information

Application	WB
Primary Accession	P30837
Other Accession	O9CZS1
Reactivity	Human, Mouse, Rat, Monkey
Host	Rabbit
Clonality	Polyclonal
Calculated MW	57249

Anti-ALDH1B1 Antibody - Additional Information**Gene ID** 219**Other Names**

ALDH5; ALDHX; Aldehyde dehydrogenase X mitochondrial; Aldehyde dehydrogenase 5; Aldehyde dehydrogenase family 1 member B1

Target/Specificity

KLH-conjugated synthetic peptide encompassing a sequence within the center region of human ALDH1B1. The exact sequence is proprietary.

Dilution

WB~~WB (1/500 - 1/1000)

Format

Liquid in 0.42% Potassium phosphate, 0.87% Sodium chloride, pH 7.3, 30% glycerol, and 0.09% (W/V) sodium azide.

Storage

Store at -20 °C. Stable for 12 months from date of receipt

Anti-ALDH1B1 Antibody - Protein Information**Name** ALDH1B1**Synonyms** ALDH5, ALDHX**Function**

ALDHs play a major role in the detoxification of alcohol- derived acetaldehyde. They are involved in the metabolism of corticosteroids, biogenic amines, neurotransmitters, and lipid peroxidation.

Cellular Location

Mitochondrion matrix.

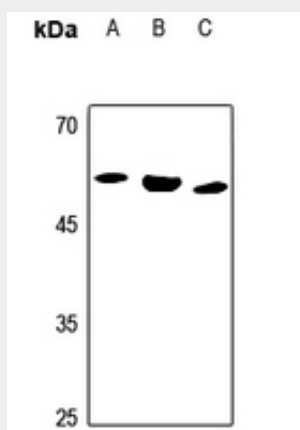
Tissue Location

Liver, testis and to a lesser extent in brain.

Anti-ALDH1B1 Antibody - Protocols

Provided below are standard protocols that you may find useful for product applications.

- [Western Blot](#)
- [Blocking Peptides](#)
- [Dot Blot](#)
- [Immunohistochemistry](#)
- [Immunofluorescence](#)
- [Immunoprecipitation](#)
- [Flow Cytometry](#)
- [Cell Culture](#)

Anti-ALDH1B1 Antibody - Images

Western blot analysis of ALDH1B1 expression in HEK293T (A), HeLa (B), H446 (C) whole cell lysates.

Anti-ALDH1B1 Antibody - Background

KLH-conjugated synthetic peptide encompassing a sequence within the center region of human ALDH1B1. The exact sequence is proprietary.