

Anti-BAK Antibody
Rabbit polyclonal antibody to BAK
Catalog # AP59484**Specification**

Anti-BAK Antibody - Product Information

Application	WB, IHC
Primary Accession	Q16611
Reactivity	Human
Host	Rabbit
Clonality	Polyclonal
Calculated MW	23409

Anti-BAK Antibody - Additional Information**Gene ID** 578**Other Names**

BAK; BCL2L7; CDN1; Bcl-2 homologous antagonist/killer; Apoptosis regulator BAK; Bcl-2-like protein 7; Bcl2-L-7

Target/Specificity

Recognizes endogenous levels of BAK protein.

DilutionWB~~WB (1/500 - 1/1000), IH (1/100 - 1/200)
IHC~~1:100~500**Format**

Liquid in 0.42% Potassium phosphate, 0.87% Sodium chloride, pH 7.3, 30% glycerol, and 0.09% (W/V) sodium azide.

Storage

Store at -20 °C. Stable for 12 months from date of receipt

Anti-BAK Antibody - Protein Information**Name** BAK1**Synonyms** BAK, BCL2L7, CDN1**Function**

Plays a role in the mitochondrial apoptotic process. Upon arrival of cell death signals, promotes mitochondrial outer membrane (MOM) permeabilization by oligomerizing to form pores within the MOM. This releases apoptogenic factors into the cytosol, including cytochrome c, promoting the activation of caspase 9 which in turn processes and activates the effector caspases.

Cellular Location

Mitochondrion outer membrane; Single-pass membrane protein

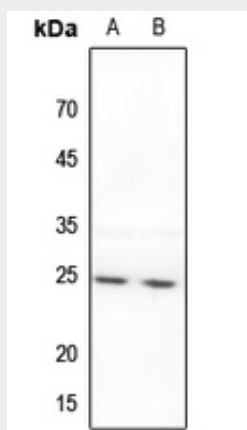
Tissue Location

Expressed in a wide variety of tissues, with highest levels in the heart and skeletal muscle

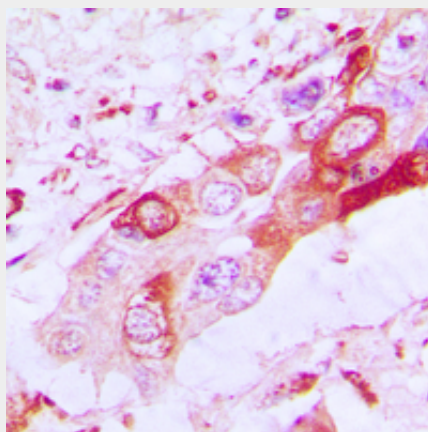
Anti-BAK Antibody - Protocols

Provided below are standard protocols that you may find useful for product applications.

- [Western Blot](#)
- [Blocking Peptides](#)
- [Dot Blot](#)
- [Immunohistochemistry](#)
- [Immunofluorescence](#)
- [Immunoprecipitation](#)
- [Flow Cytometry](#)
- [Cell Culture](#)

Anti-BAK Antibody - Images

Western blot analysis of BAK expression in Hela (A), H1688 (B) whole cell lysates.



Immunohistochemical analysis of BAK staining in human lung cancer formalin fixed paraffin embedded tissue section. The section was pre-treated using heat mediated antigen retrieval with sodium citrate buffer (pH 6.0). The section was then incubated with the antibody at room temperature and detected using an HRP conjugated compact polymer system. DAB was used as

the chromogen. The section was then counterstained with haematoxylin and mounted with DPX.

Anti-BAK Antibody - Background

KLH-conjugated synthetic peptide encompassing a sequence within the N-term region of human BAK. The exact sequence is proprietary.