

**Anti-BMP3 Antibody**  
**Rabbit polyclonal antibody to BMP3**  
**Catalog # AP59486****Specification**

---

**Anti-BMP3 Antibody - Product Information**

Application	WB, IHC
Primary Accession	<a href="#">P12645</a>
Other Accession	<a href="#">Q8BHE5</a>
Reactivity	Human, Mouse
Host	Rabbit
Clonality	Polyclonal
Calculated MW	53372

**Anti-BMP3 Antibody - Additional Information****Gene ID** 651**Other Names**

BMP3A; Bone morphogenetic protein 3; BMP-3; Bone morphogenetic protein 3A; BMP-3A; Osteogenin

**Target/Specificity**

Recognizes endogenous levels of BMP3 protein.

**Dilution**

WB~~WB (1/500 - 1/1000), IH (1/100 - 1/200)

IHC~~1:100~500

**Format**

Liquid in 0.42% Potassium phosphate, 0.87% Sodium chloride, pH 7.3, 30% glycerol, and 0.09% (W/V) sodium azide.

**Storage**

Store at -20 °C.Stable for 12 months from date of receipt

**Anti-BMP3 Antibody - Protein Information****Name** BMP3**Synonyms** BMP3A**Function**

Growth factor of the TGF-beta superfamily that plays an essential role in developmental process by inducing and patterning early skeletal formation and by negatively regulating bone density. Antagonizes the ability of certain osteogenic BMPs to induce osteoprogenitor differentiation and ossification (PubMed:<a href="http://www.uniprot.org/citations/11138004" target="\_blank">11138004</a>, PubMed:<a href="http://www.uniprot.org/citations/15269709"

target="\_blank">15269709</a>). Initiates signaling cascades by associating with type II receptor ACVR2B to activate SMAD2-dependent and SMAD-independent signaling cascades including TAK1 and JNK pathways (PubMed:<a href="http://www.uniprot.org/citations/31665064" target="\_blank">31665064</a>).

**Cellular Location**

Secreted.

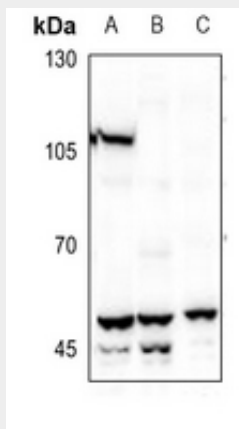
**Tissue Location**

Expressed in adult and fetal cartilage.

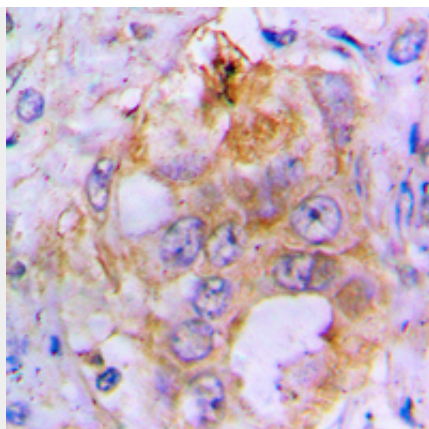
**Anti-BMP3 Antibody - Protocols**

Provided below are standard protocols that you may find useful for product applications.

- [Western Blot](#)
- [Blocking Peptides](#)
- [Dot Blot](#)
- [Immunohistochemistry](#)
- [Immunofluorescence](#)
- [Immunoprecipitation](#)
- [Flow Cytometry](#)
- [Cell Culture](#)

**Anti-BMP3 Antibody - Images**

Western blot analysis of BMP3 expression in A549 (A), H446 (B), U2OS (C), mouse lung (D) whole cell lysates.



Immunohistochemical analysis of BMP3 staining in human lung cancer formalin fixed paraffin embedded tissue section. The section was pre-treated using heat mediated antigen retrieval with sodium citrate buffer (pH 6.0). The section was then incubated with the antibody at room temperature and detected using an HRP conjugated compact polymer system. DAB was used as the chromogen. The section was then counterstained with haematoxylin and mounted with DPX.

#### **Anti-BMP3 Antibody - Background**

KLH-conjugated synthetic peptide encompassing a sequence within the center region of human BMP3. The exact sequence is proprietary.