

Anti-Cyclin B1 Antibody
Rabbit polyclonal antibody to Cyclin B1
Catalog # AP59503**Specification**

Anti-Cyclin B1 Antibody - Product Information

| | |
|-------------------|------------------------|
| Application | WB, IF/IC, IHC |
| Primary Accession | P14635 |
| Reactivity | Human |
| Host | Rabbit |
| Clonality | Polyclonal |
| Calculated MW | 48337 |

Anti-Cyclin B1 Antibody - Additional Information**Gene ID** 891**Other Names**

CCNB; G2/mitotic-specific cyclin-B1

Target/Specificity

Recognizes endogenous levels of Cyclin B1 protein.

DilutionWB~~WB (1/500 - 1/1000), IH (1/100 - 1/200), IF/IC (1/100 - 1/500)
IF/IC~~N/A
IHC~~1:100~500**Format**

Liquid in 0.42% Potassium phosphate, 0.87% Sodium chloride, pH 7.3, 30% glycerol, and 0.09% (W/V) sodium azide.

Storage

Store at -20 °C. Stable for 12 months from date of receipt

Anti-Cyclin B1 Antibody - Protein Information**Name** CCNB1**Synonyms** CCNB**Function**

Essential for the control of the cell cycle at the G2/M (mitosis) transition.

Cellular Location

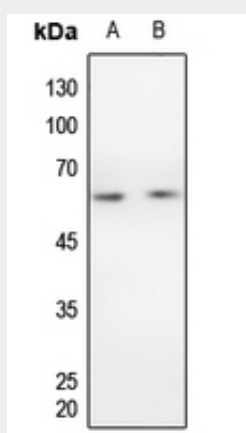
Cytoplasm. Nucleus. Cytoplasm, cytoskeleton, microtubule organizing center, centrosome

Anti-Cyclin B1 Antibody - Protocols

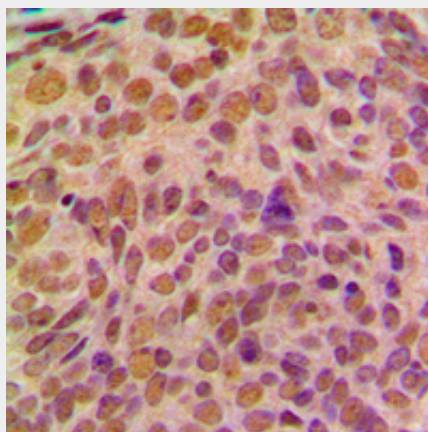
Provided below are standard protocols that you may find useful for product applications.

- [Western Blot](#)
- [Blocking Peptides](#)
- [Dot Blot](#)
- [Immunohistochemistry](#)
- [Immunofluorescence](#)
- [Immunoprecipitation](#)
- [Flow Cytometry](#)
- [Cell Culture](#)

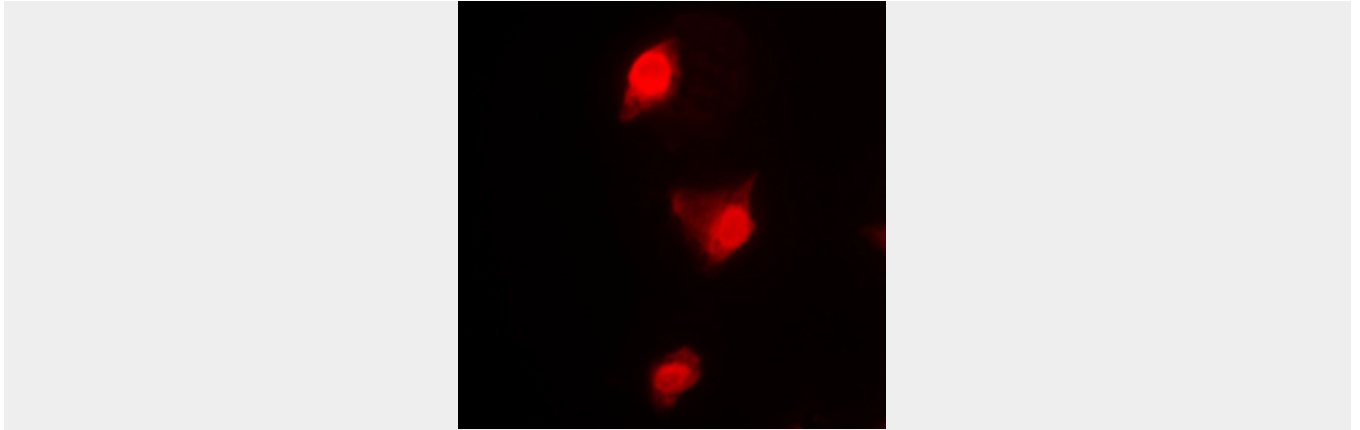
Anti-Cyclin B1 Antibody - Images



Western blot analysis of Cyclin B1 expression in HEK293T (A), HeLa (B) whole cell lysates.



Immunohistochemical analysis of Cyclin B1 staining in human breast cancer formalin fixed paraffin embedded tissue section. The section was pre-treated using heat mediated antigen retrieval with sodium citrate buffer (pH 6.0). The section was then incubated with the antibody at room temperature and detected using an HRP conjugated compact polymer system. DAB was used as the chromogen. The section was then counterstained with haematoxylin and mounted with DPX.



Immunofluorescent analysis of Cyclin B1 staining in K562 cells. Formalin-fixed cells were permeabilized with 0.1% Triton X-100 in TBS for 5-10 minutes and blocked with 3% BSA-PBS for 30 minutes at room temperature. Cells were probed with the primary antibody in 3% BSA-PBS and incubated overnight at 4 °C in a humidified chamber. Cells were washed with PBST and incubated with a DyLight 594-conjugated secondary antibody (red) in PBS at room temperature in the dark.

Anti-Cyclin B1 Antibody - Background

KLH-conjugated synthetic peptide encompassing a sequence within the center region of human Cyclin B1. The exact sequence is proprietary.