

**Anti-COMT Antibody**  
**Rabbit polyclonal antibody to COMT**  
**Catalog # AP59521****Specification**

---

**Anti-COMT Antibody - Product Information**

Application	WB, IF/IC
Primary Accession	<a href="#">P21964</a>
Other Accession	<a href="#">O88587</a>
Reactivity	Human, Mouse, Rat, Monkey
Host	Rabbit
Clonality	Polyclonal
Calculated MW	30037

**Anti-COMT Antibody - Additional Information****Gene ID** 1312**Other Names**

Catechol O-methyltransferase

**Target/Specificity**

Recognizes endogenous levels of COMT protein.

**Dilution**

WB~~WB (1/500 - 1/1000), IF/IC (1/100 - 1/500)

IF/IC~~N/A

**Format**

Liquid in 0.42% Potassium phosphate, 0.87% Sodium chloride, pH 7.3, 30% glycerol, and 0.09% (W/V) sodium azide.

**Storage**

Store at -20 °C. Stable for 12 months from date of receipt

**Anti-COMT Antibody - Protein Information****Name** COMT ([HGNC:2228](#))**Function**

Catalyzes the O-methylation, and thereby the inactivation, of catecholamine neurotransmitters and catechol hormones. Also shortens the biological half-lives of certain neuroactive drugs, like L-DOPA, alpha-methyl DOPA and isoproterenol.

**Cellular Location**

[Isoform Soluble]: Cytoplasm

**Tissue Location**

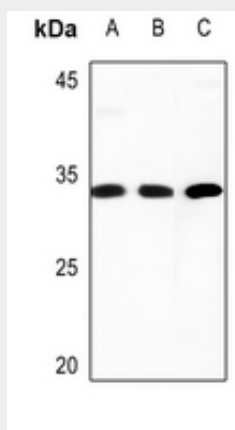
Brain, liver, placenta, lymphocytes and erythrocytes

### Anti-COMT Antibody - Protocols

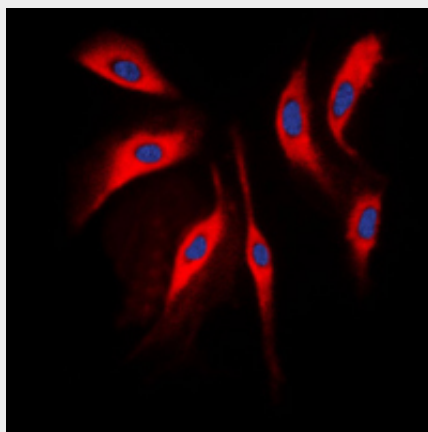
Provided below are standard protocols that you may find useful for product applications.

- [Western Blot](#)
- [Blocking Peptides](#)
- [Dot Blot](#)
- [Immunohistochemistry](#)
- [Immunofluorescence](#)
- [Immunoprecipitation](#)
- [Flow Cytometry](#)
- [Cell Culture](#)

### Anti-COMT Antibody - Images



Western blot analysis of COMT expression in A549 (A), U2OS (B), rat testis (C) whole cell lysates.



Immunofluorescent analysis of COMT staining in Raw264.7 cells. Formalin-fixed cells were permeabilized with 0.1% Triton X-100 in TBS for 5-10 minutes and blocked with 3% BSA-PBS for 30 minutes at room temperature. Cells were probed with the primary antibody in 3% BSA-PBS and incubated overnight at 4 °C in a humidified chamber. Cells were washed with PBST and incubated with a DyLight 594-conjugated secondary antibody (red) in PBS at room temperature in the dark. DAPI was used to stain the cell nuclei (blue).

### Anti-COMT Antibody - Background

KLH-conjugated synthetic peptide encompassing a sequence within the center region of human COMT. The exact sequence is proprietary.