

**Anti-CREB (pS133) Antibody**  
**Rabbit polyclonal antibody to CREB (pS133)**  
**Catalog # AP59524****Specification**

---

**Anti-CREB (pS133) Antibody - Product Information**

|                   |  |
|-------------------|--|
| Application       | WB, IP, IHC  |
| Primary Accession | <a href="#">P16220</a>                             |
| Other Accession   | <a href="#">Q01147</a>                             |
| Reactivity        | Human, Mouse, Rat, Zebrafish, Pig, Chicken, Bovine |
| Host              | Rabbit   |
| Clonality         | Polyclonal   |
| Calculated MW     | 35136  |

**Anti-CREB (pS133) Antibody - Additional Information****Gene ID** 1385**Other Names**

Cyclic AMP-responsive element-binding protein 1; CREB-1; cAMP-responsive element-binding protein 1

**Target/Specificity**

KLH-conjugated synthetic peptide encompassing a sequence within the center region of human CREB. The exact sequence is proprietary.

**Dilution**

WB~~WB (1/500 - 1/1000), IH (1/100 - 1/200), IP (1/10 - 1/100)

IP~~N/A

IHC~~1:100~500

**Format**

Liquid in 0.42% Potassium phosphate, 0.87% Sodium chloride, pH 7.3, 30% glycerol, and 0.09% (W/V) sodium azide.

**Storage**

Store at -20 °C. Stable for 12 months from date of receipt

**Anti-CREB (pS133) Antibody - Protein Information****Name** CREB1**Function**

Phosphorylation-dependent transcription factor that stimulates transcription upon binding to the DNA cAMP response element (CRE), a sequence present in many viral and cellular promoters (By similarity). Transcription activation is enhanced by the TORC coactivators which act independently of Ser-119 phosphorylation (PubMed:&lt;a href="http://www.uniprot.org/citations/14536081"

target="\_blank">14536081</a>). Involved in different cellular processes including the synchronization of circadian rhythmicity and the differentiation of adipose cells (By similarity). Regulates the expression of apoptotic and inflammatory response factors in cardiomyocytes in response to ERFE-mediated activation of AKT signaling (By similarity).

#### Cellular Location

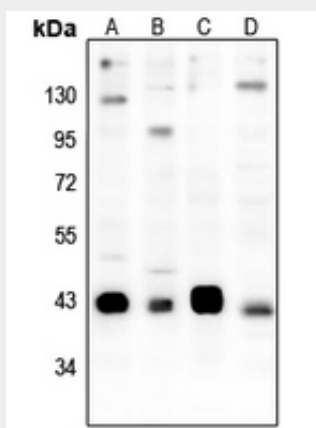
Nucleus {ECO:0000255|PROSITE-ProRule:PRU00312, ECO:0000255|PROSITE-ProRule:PRU00978, ECO:0000269|PubMed:12552083}

#### Anti-CREB (pS133) Antibody - Protocols

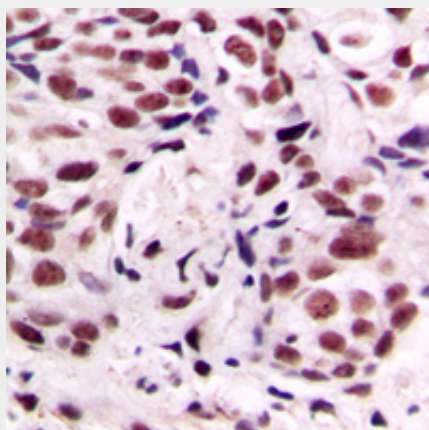
Provided below are standard protocols that you may find useful for product applications.

- [Western Blot](#)
- [Blocking Peptides](#)
- [Dot Blot](#)
- [Immunohistochemistry](#)
- [Immunofluorescence](#)
- [Immunoprecipitation](#)
- [Flow Cytometry](#)
- [Cell Culture](#)

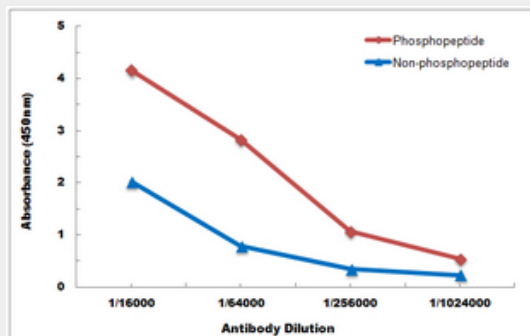
#### Anti-CREB (pS133) Antibody - Images



Western blot analysis of CREB (pS133) expression in C6 (A), NIH3T3 (B), HEK293T (C), H1792 (D) whole cell lysates.



Immunohistochemical analysis of CREB (pS133) staining in human breast cancer formalin fixed paraffin embedded tissue section. The section was pre-treated using heat mediated antigen retrieval with sodium citrate buffer (pH 6.0). The section was then incubated with the antibody at room temperature and detected using an HRP conjugated compact polymer system. DAB was used as the chromogen. The section was then counterstained with haematoxylin and mounted with DPX.



Direct ELISA antibody dose-response curve using Anti-CREB (pS133) Antibody. Antigen (phosphopeptide and non-phosphopeptide) concentration is 5 ug/ml. Goat Anti-Rabbit IgG (H&L) - HRP was used as the secondary antibody, and signal was developed by TMB substrate.

#### **Anti-CREB (pS133) Antibody - Background**

KLH-conjugated synthetic peptide encompassing a sequence within the center region of human CREB. The exact sequence is proprietary.