

Anti-CstF-64 Antibody
Rabbit polyclonal antibody to CstF-64
Catalog # AP59527

Specification

Anti-CstF-64 Antibody - Product Information

Application	WB, IP, IF/IC, IHC
Primary Accession	P33240
Other Accession	Q8BIO5
Reactivity	Human, Mouse, Rat, Zebrafish, Bovine
Host	Rabbit
Clonality	Polyclonal
Calculated MW	60959

Anti-CstF-64 Antibody - Additional Information

Gene ID 1478

Other Names

Cleavage stimulation factor subunit 2; CF-1 64 kDa subunit; Cleavage stimulation factor 64 kDa subunit; CSTF 64 kDa subunit; CstF-64

Target/Specificity

KLH-conjugated synthetic peptide encompassing a sequence within the N-term region of human CstF-64. The exact sequence is proprietary.

Dilution

WB~~WB (1/500 - 1/1000), IH (1/100 - 1/200), IF/IC (1/100 - 1/500), IP (1/10 - 1/100)
IP~~N/A
IF/IC~~N/A
IHC~~1:100~500

Format

Liquid in 0.42% Potassium phosphate, 0.87% Sodium chloride, pH 7.3, 30% glycerol, and 0.09% (W/V) sodium azide.

Storage

Store at -20 °C. Stable for 12 months from date of receipt

Anti-CstF-64 Antibody - Protein Information

Name CSTF2

Function

One of the multiple factors required for polyadenylation and 3'-end cleavage of mammalian pre-mRNAs. This subunit is directly involved in the binding to pre-mRNAs.

Cellular Location

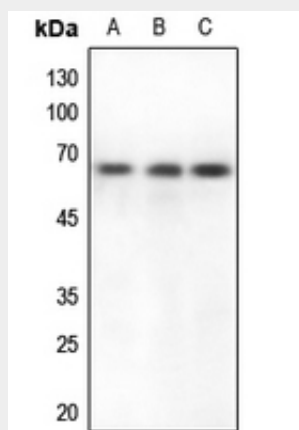
Nucleus. Note=Localized with DDX1 in cleavage bodies.

Anti-CstF-64 Antibody - Protocols

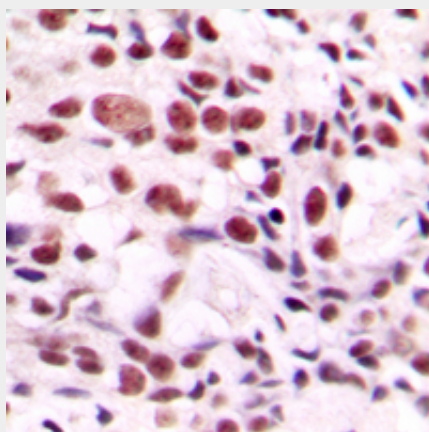
Provided below are standard protocols that you may find useful for product applications.

- [Western Blot](#)
- [Blocking Peptides](#)
- [Dot Blot](#)
- [Immunohistochemistry](#)
- [Immunofluorescence](#)
- [Immunoprecipitation](#)
- [Flow Cytometry](#)
- [Cell Culture](#)

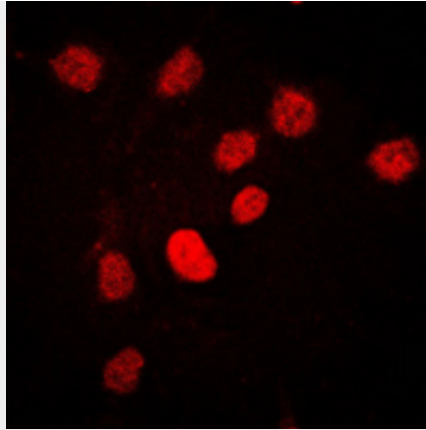
Anti-CstF-64 Antibody - Images



Western blot analysis of CstF-64 expression in mouse spleen (A), rat spleen (B), rat brain (C) whole cell lysates.



Immunohistochemical analysis of CstF-64 staining in human breast cancer formalin fixed paraffin embedded tissue section. The section was pre-treated using heat mediated antigen retrieval with sodium citrate buffer (pH 6.0). The section was then incubated with the antibody at room temperature and detected using an HRP conjugated compact polymer system. DAB was used as the chromogen. The section was then counterstained with haematoxylin and mounted with DPX.



Immunofluorescent analysis of CstF-64 staining in HeLa cells. Formalin-fixed cells were permeabilized with 0.1% Triton X-100 in TBS for 5-10 minutes and blocked with 3% BSA-PBS for 30 minutes at room temperature. Cells were probed with the primary antibody in 3% BSA-PBS and incubated overnight at 4 °C in a humidified chamber. Cells were washed with PBST and incubated with a DyLight 594-conjugated secondary antibody (red) in PBS at room temperature in the dark.

Anti-CstF-64 Antibody - Background

KLH-conjugated synthetic peptide encompassing a sequence within the N-term region of human CstF-64. The exact sequence is proprietary.