

Anti-Cytochrome P450 3A4/5 Antibody
Rabbit polyclonal antibody to Cytochrome P450 3A4/5
Catalog # AP59530

Specification

Anti-Cytochrome P450 3A4/5 Antibody - Product Information

Application	WB, IF/IC, IHC
Primary Accession	P08684 , P20815
Reactivity	Human, Mouse, Rat
Host	Rabbit
Clonality	Polyclonal

Anti-Cytochrome P450 3A4/5 Antibody - Additional Information

Other Names

CYP3A4; CYP3A3; Cytochrome P450 3A4; 1, 8-cineole 2-exo-monooxygenase; Albendazole monooxygenase; Albendazole sulfoxidase; CYP11A3; CYP11A4; Cytochrome P450 3A3; Cytochrome P450 HLP; Cytochrome P450 NF-25; Cytochrome P450-PCN1; Nifedipine oxidase; Quinine 3-monooxygenase; Taurochenodeoxycholate 6-alpha-hydroxylase; CYP3A5; Cytochrome P450 3A5; CYP11A5; Cytochrome P450 HLP2; Cytochrome P450-PCN3

Target/Specificity

KLH-conjugated synthetic peptide encompassing a sequence within the center region of human Cytochrome P450 3A4/5. The exact sequence is proprietary.

Dilution

WB~~WB (1/500 - 1/1000), IH (1/100 - 1/200), IF/IC (1/100 - 1/500)

IF/IC~~N/A

IHC~~1:100~500

Format

Liquid in 0.42% Potassium phosphate, 0.87% Sodium chloride, pH 7.3, 30% glycerol, and 0.09% (W/V) sodium azide.

Storage

Store at -20 °C. Stable for 12 months from date of receipt

Anti-Cytochrome P450 3A4/5 Antibody - Protein Information

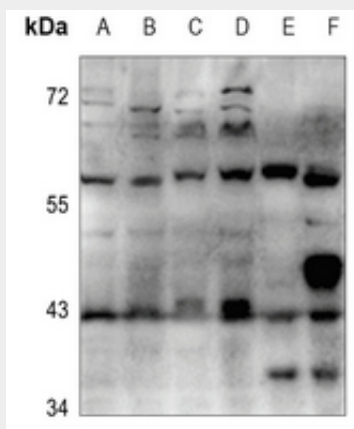
Anti-Cytochrome P450 3A4/5 Antibody - Protocols

Provided below are standard protocols that you may find useful for product applications.

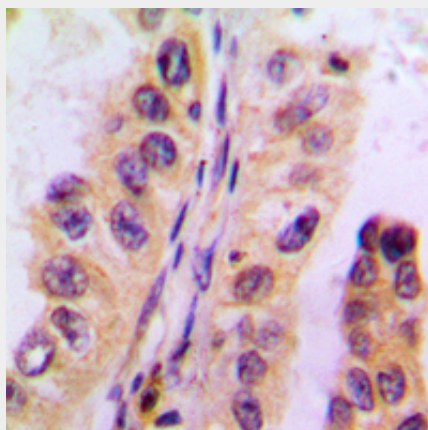
- [Western Blot](#)
- [Blocking Peptides](#)
- [Dot Blot](#)

- [Immunohistochemistry](#)
- [Immunofluorescence](#)
- [Immunoprecipitation](#)
- [Flow Cytometry](#)
- [Cell Culture](#)

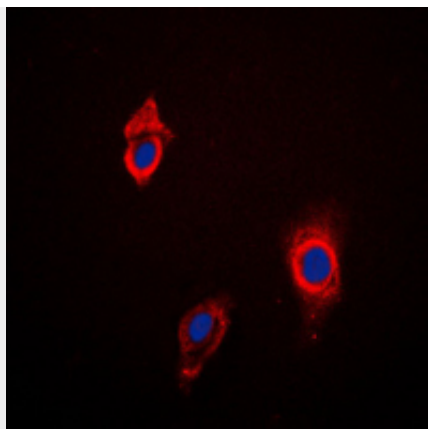
Anti-Cytochrome P450 3A4/5 Antibody - Images



Western blot analysis of Cytochrome P450 3A4/5 expression in HCT116 (A), PC3 (B), LO2 (C), HepG2 (D), mouse liver (E), rat liver (F) whole cell lysates.



Immunohistochemical analysis of Cytochrome P450 3A4/5 staining in human liver cancer formalin fixed paraffin embedded tissue section. The section was pre-treated using heat mediated antigen retrieval with sodium citrate buffer (pH 6.0). The section was then incubated with the antibody at room temperature and detected using an HRP conjugated compact polymer system. DAB was used as the chromogen. The section was then counterstained with haematoxylin and mounted with DPX.



Immunofluorescent analysis of Cytochrome P450 3A4/5 staining in HepG2 cells. Formalin-fixed cells were permeabilized with 0.1% Triton X-100 in TBS for 5-10 minutes and blocked with 3% BSA-PBS for 30 minutes at room temperature. Cells were probed with the primary antibody in 3% BSA-PBS and incubated overnight at 4 °C in a humidified chamber. Cells were washed with PBST and incubated with a DyLight 594-conjugated secondary antibody (red) in PBS at room temperature in the dark. DAPI was used to stain the cell nuclei (blue).

Anti-Cytochrome P450 3A4/5 Antibody - Background

KLH-conjugated synthetic peptide encompassing a sequence within the center region of human Cytochrome P450 3A4/5. The exact sequence is proprietary.