

Anti-DGK beta Antibody
Rabbit polyclonal antibody to DGK beta
Catalog # AP59534**Specification**

Anti-DGK beta Antibody - Product Information

Application	WB
Primary Accession	Q9Y6T7
Reactivity	Human, Monkey
Host	Rabbit
Clonality	Polyclonal
Calculated MW	90595

Anti-DGK beta Antibody - Additional Information**Gene ID** 1607**Other Names**

DAGK2; KIAA0718; Diacylglycerol kinase beta; DAG kinase beta; 90 kDa diacylglycerol kinase; Diglyceride kinase beta; DGK-beta

Target/Specificity

Recognizes endogenous levels of DGK beta protein.

Dilution

WB~~WB (1/500 - 1/1000)

Format

Liquid in 0.42% Potassium phosphate, 0.87% Sodium chloride, pH 7.3, 30% glycerol, and 0.09% (W/V) sodium azide.

Storage

Store at -20 °C. Stable for 12 months from date of receipt

Anti-DGK beta Antibody - Protein Information**Name** DGKB**Synonyms** DAGK2, KIAA0718**Function**

Diacylglycerol kinase that converts diacylglycerol/DAG into phosphatidic acid/phosphatidate/PA and regulates the respective levels of these two bioactive lipids (PubMed:11719522). Thereby, acts as a central switch between the signaling pathways activated by these second messengers with different cellular targets and opposite effects in numerous biological processes (Probable). Has a higher activity with long-chain diacylglycerols like 1,2-di-(9Z-octadecenoyl)-sn-glycerol compared to 1,2-didecanoyl-sn-glycerol (By similarity). Specifically expressed in brain, it regulates

neuron-specific morphological changes including neurite branching and neurite spine formation (By similarity).

Cellular Location

Postsynaptic cell membrane {ECO:0000250|UniProtKB:Q6NS52}; Peripheral membrane protein {ECO:0000250|UniProtKB:Q6NS52}. Cell membrane; Peripheral membrane protein. Cytoplasm Note=Translocation to the plasma membrane is induced by phorbol esters

Tissue Location

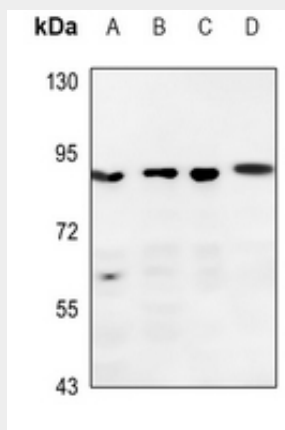
[Isoform 1]: Specifically expressed in brain but also detected in uterus (PubMed:11719522). In adult brain, expressed in the amygdala, caudate nucleus, and hippocampus (PubMed:11719522)

Anti-DGK beta Antibody - Protocols

Provided below are standard protocols that you may find useful for product applications.

- [Western Blot](#)
- [Blocking Peptides](#)
- [Dot Blot](#)
- [Immunohistochemistry](#)
- [Immunofluorescence](#)
- [Immunoprecipitation](#)
- [Flow Cytometry](#)
- [Cell Culture](#)

Anti-DGK beta Antibody - Images



Western blot analysis of DGK beta expression in Hela (A), DLD (B), HGC27 (C), U2OS (D) whole cell lysates.

Anti-DGK beta Antibody - Background

KLH-conjugated synthetic peptide encompassing a sequence within the C-term region of human DGK beta. The exact sequence is proprietary.