

Anti-DHPS Antibody
Rabbit polyclonal antibody to DHPS
Catalog # AP59535**Specification**

Anti-DHPS Antibody - Product Information

Application	WB
Primary Accession	P49366
Reactivity	Human, Mouse, Rat, Monkey
Host	Rabbit
Clonality	Polyclonal
Calculated MW	40971

Anti-DHPS Antibody - Additional Information**Gene ID** 1725**Other Names**

DS; Deoxyhypusine synthase; DHS

Target/Specificity

KLH-conjugated synthetic peptide encompassing a sequence within the center region of human DHPS. The exact sequence is proprietary.

Dilution

WB~~WB (1/500 - 1/1000)

Format

Liquid in 0.42% Potassium phosphate, 0.87% Sodium chloride, pH 7.3, 30% glycerol, and 0.09% (W/V) sodium azide.

Storage

Store at -20 °C. Stable for 12 months from date of receipt

Anti-DHPS Antibody - Protein Information**Name** DHPS**Synonyms** DS**Function**

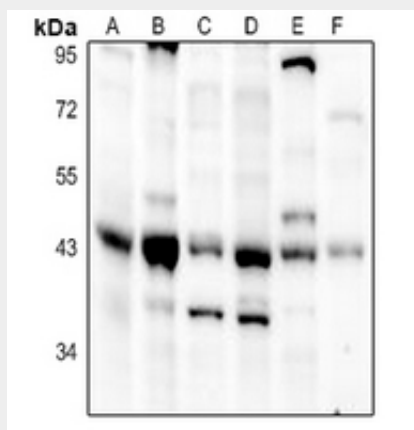
Catalyzes the NAD-dependent oxidative cleavage of spermidine and the subsequent transfer of the butylamine moiety of spermidine to the epsilon-amino group of a critical lysine residue of the eIF-5A precursor protein to form the intermediate deoxyhypusine residue (PubMed:30661771). This is the first step of the post-translational modification of that lysine into an unusual amino acid residue named hypusine. Hypusination is unique to mature eIF-5A factor and is essential for its function.

Anti-DHPS Antibody - Protocols

Provided below are standard protocols that you may find useful for product applications.

- [Western Blot](#)
- [Blocking Peptides](#)
- [Dot Blot](#)
- [Immunohistochemistry](#)
- [Immunofluorescence](#)
- [Immunoprecipitation](#)
- [Flow Cytometry](#)
- [Cell Culture](#)

Anti-DHPS Antibody - Images



Western blot analysis of DHPS expression in mouse heart (A), Jurkat (B), 3T3L1 (C), PMVEC (D), rat lung (E), mouse spleen (F) whole cell lysates.

Anti-DHPS Antibody - Background

KLH-conjugated synthetic peptide encompassing a sequence within the center region of human DHPS. The exact sequence is proprietary.