

Anti-CYB5R3 Antibody
Rabbit polyclonal antibody to CYB5R3
Catalog # AP59536**Specification**

Anti-CYB5R3 Antibody - Product Information

Application	WB, IP, IHC
Primary Accession	P00387
Reactivity	Human, Mouse, Rat, Dog
Host	Rabbit
Clonality	Polyclonal
Calculated MW	34235

Anti-CYB5R3 Antibody - Additional Information**Gene ID** 1727**Other Names**

DIA1; NADH-cytochrome b5 reductase 3; B5R; Cytochrome b5 reductase; Diaphorase-1

Target/Specificity

KLH-conjugated synthetic peptide encompassing a sequence within the center region of human CYB5R3. The exact sequence is proprietary.

Dilution

WB~~WB (1/500 - 1/1000), IH (1/100 - 1/200), IP (1/10 - 1/100)

IP~~N/A

IHC~~1:100~500

Format

Liquid in 0.42% Potassium phosphate, 0.87% Sodium chloride, pH 7.3, 30% glycerol, and 0.09% (W/V) sodium azide.

Storage

Store at -20 °C. Stable for 12 months from date of receipt

Anti-CYB5R3 Antibody - Protein Information**Name** CYB5R3 ([HGNC:2873](#))**Synonyms** DIA1**Function**

Catalyzes the reduction of two molecules of cytochrome b5 using NADH as the electron donor.

Cellular Location

[Isoform 1]: Endoplasmic reticulum membrane; Lipid-anchor {ECO:0000250|UniProtKB:P20070}; Cytoplasmic side {ECO:0000250|UniProtKB:P20070}. Mitochondrion outer membrane; Lipid-anchor

{ECO:0000250|UniProtKB:P20070}; Cytoplasmic side {ECO:0000250|UniProtKB:P20070}

Tissue Location

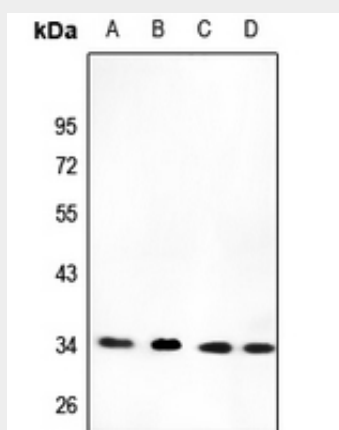
[Isoform 2]: Expressed at late stages of erythroid maturation.

Anti-CYB5R3 Antibody - Protocols

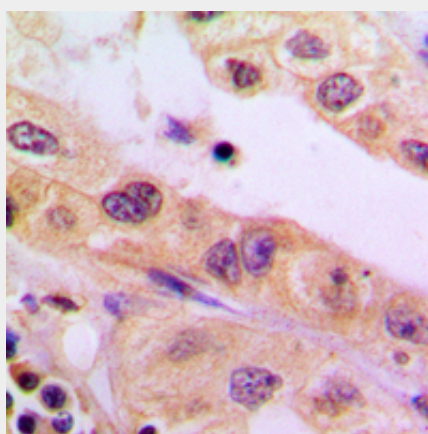
Provided below are standard protocols that you may find useful for product applications.

- [Western Blot](#)
- [Blocking Peptides](#)
- [Dot Blot](#)
- [Immunohistochemistry](#)
- [Immunofluorescence](#)
- [Immunoprecipitation](#)
- [Flow Cytometry](#)
- [Cell Culture](#)

Anti-CYB5R3 Antibody - Images



Western blot analysis of CYB5R3 expression in MCF7 (A), A549 (B), mouse testis (C), rat testis (D) whole cell lysates.



Immunohistochemical analysis of CYB5R3 staining in human liver cancer formalin fixed paraffin embedded tissue section. The section was pre-treated using heat mediated antigen retrieval with sodium citrate buffer (pH 6.0). The section was then incubated with the antibody at room

temperature and detected using an HRP conjugated compact polymer system. DAB was used as the chromogen. The section was then counterstained with haematoxylin and mounted with DPX.

Anti-CYB5R3 Antibody - Background

KLH-conjugated synthetic peptide encompassing a sequence within the center region of human CYB5R3. The exact sequence is proprietary.