

Anti-PSD93 Antibody
Rabbit polyclonal antibody to PSD93
Catalog # AP59539**Specification**

Anti-PSD93 Antibody - Product Information

Application	WB, IP
Primary Accession	Q15700
Other Accession	Q91XM9
Reactivity	Human, Mouse, Rat
Host	Rabbit
Clonality	Polyclonal
Calculated MW	97552

Anti-PSD93 Antibody - Additional Information**Gene ID** 1740**Other Names**

Disks large homolog 2; Channel-associated protein of synapse-110; Chapsyn-110; Postsynaptic density protein PSD-93

Target/Specificity

Recognizes endogenous levels of PSD93 protein.

Dilution

WB~~WB (1/500 - 1/1000), IP (1/10 - 1/100)

IP~~N/A

Format

Liquid in 0.42% Potassium phosphate, 0.87% Sodium chloride, pH 7.3, 30% glycerol, and 0.09% (W/V) sodium azide.

Storage

Store at -20 °C.Stable for 12 months from date of receipt

Anti-PSD93 Antibody - Protein Information**Name** DLG2**Function**

Required for perception of chronic pain through NMDA receptor signaling. Regulates surface expression of NMDA receptors in dorsal horn neurons of the spinal cord. Interacts with the cytoplasmic tail of NMDA receptor subunits as well as inward rectifying potassium channels. Involved in regulation of synaptic stability at cholinergic synapses. Part of the postsynaptic protein scaffold of excitatory synapses (By similarity).

Cellular Location

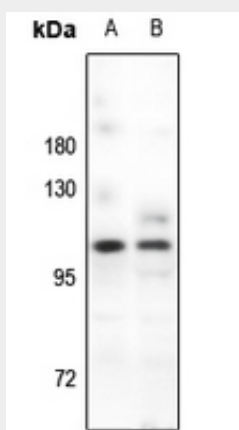
Cell membrane {ECO:0000250|UniProtKB:Q63622}; Lipid-anchor {ECO:0000250|UniProtKB:Q63622}. Postsynaptic density {ECO:0000250|UniProtKB:Q63622}. Synapse. Membrane {ECO:0000250|UniProtKB:Q63622}. Cell projection, axon {ECO:0000250|UniProtKB:Q63622}. Perikaryon {ECO:0000250|UniProtKB:Q63622}.
Note=Concentrated in soma and postsynaptic density of a subset of neurons {ECO:0000250|UniProtKB:Q63622}

Anti-PSD93 Antibody - Protocols

Provided below are standard protocols that you may find useful for product applications.

- [Western Blot](#)
- [Blocking Peptides](#)
- [Dot Blot](#)
- [Immunohistochemistry](#)
- [Immunofluorescence](#)
- [Immunoprecipitation](#)
- [Flow Cytometry](#)
- [Cell Culture](#)

Anti-PSD93 Antibody - Images



Western blot analysis of PSD93 expression in SHSY5Y (A), MCF7 (B) whole cell lysates.

Anti-PSD93 Antibody - Background

KLH-conjugated synthetic peptide encompassing a sequence within the center region of human PSD93. The exact sequence is proprietary.