

**Anti-ELF4 Antibody**  
**Rabbit polyclonal antibody to ELF4**  
**Catalog # AP59545****Specification**

---

**Anti-ELF4 Antibody - Product Information**

Application	<b>WB</b>
Primary Accession	<a href="#">O99607</a>
Other Accession	<a href="#">O9Z2U4</a>
Reactivity	<b>Human, Mouse, Rat, Pig</b>
Host	<b>Rabbit</b>
Clonality	<b>Polyclonal</b>
Calculated MW	<b>70730</b>

**Anti-ELF4 Antibody - Additional Information****Gene ID** 2000**Other Names**

ELFR; MEF; ETS-related transcription factor Elf-4; E74-like factor 4; Myeloid Elf-1-like factor

**Target/Specificity**

KLH-conjugated synthetic peptide encompassing a sequence within the center region of human ELF4. The exact sequence is proprietary.

**Dilution**

WB~~WB (1/500 - 1/1000)

**Format**

Liquid in 0.42% Potassium phosphate, 0.87% Sodium chloride, pH 7.3, 30% glycerol, and 0.09% (W/V) sodium azide.

**Storage**

Store at -20 °C. Stable for 12 months from date of receipt

**Anti-ELF4 Antibody - Protein Information****Name** ELF4 {ECO:0000312|EMBL:CAI42882.1}**Function**

Transcriptional activator that binds to DNA sequences containing the consensus 5'-WGGA-3'. Transactivates promoters of the hematopoietic growth factor genes CSF2, IL3, IL8, and of the bovine lysozyme gene. Acts synergistically with RUNX1 to transactivate the IL3 promoter (By similarity). Transactivates the PRF1 promoter in natural killer (NK) cells and CD8+ T cells (PubMed:<a href="http://www.uniprot.org/citations/34326534" target="\_blank">34326534</a>). Plays a role in the development and function of NK and NK T-cells and in innate immunity. Controls the proliferation and homing of CD8+ T-cells via the Kruppel-like factors KLF4 and KLF2 (By similarity). Controls cell senescence in a p53-dependent manner. Can also promote cellular

transformation through inhibition of the p16 pathway. Is a transcriptional regulator of inflammation, controlling T-helper 17 (Th17) cells and macrophage inflammatory responses. Required for sustained transcription of anti-inflammatory genes, including IL1RN (PubMed:<a href="http://www.uniprot.org/citations/34326534" target="\_blank">34326534</a>, PubMed:<a href="http://www.uniprot.org/citations/35266071" target="\_blank">35266071</a>). Is a negative regulator of pro-inflammatory cytokines expression including IL17A, IL1B, IL6, TNFA and CXCL1 (PubMed:<a href="http://www.uniprot.org/citations/34326534" target="\_blank">34326534</a>, PubMed:<a href="http://www.uniprot.org/citations/35266071" target="\_blank">35266071</a>). Down-regulates expression of TREM1, a cell surface receptor involved in the amplification of inflammatory responses (By similarity) (PubMed:<a href="http://www.uniprot.org/citations/34326534" target="\_blank">34326534</a>, PubMed:<a href="http://www.uniprot.org/citations/35266071" target="\_blank">35266071</a>).

#### Cellular Location

Nucleus, PML body. Note=Accumulation into PML nuclear bodies is mediated by PML

#### Tissue Location

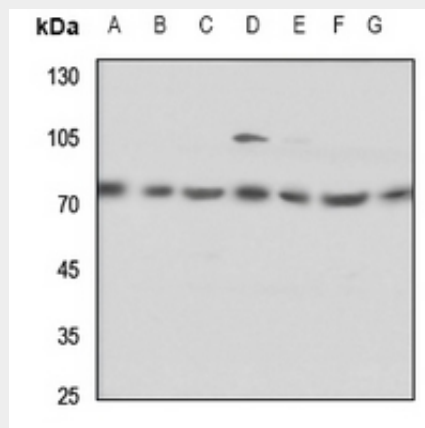
Abundantly expressed in the placenta and in a variety of myeloid leukemia cell lines. Moderate levels of expression in heart, lung, spleen, thymus, peripheral blood lymphocytes, ovary and colon. Lower levels of expression in Jurkat T-cells and other T-cell lines and no expression in brain.

#### Anti-ELF4 Antibody - Protocols

Provided below are standard protocols that you may find useful for product applications.

- [Western Blot](#)
- [Blocking Peptides](#)
- [Dot Blot](#)
- [Immunohistochemistry](#)
- [Immunofluorescence](#)
- [Immunoprecipitation](#)
- [Flow Cytometry](#)
- [Cell Culture](#)

#### Anti-ELF4 Antibody - Images



Western blot analysis of ELF4 expression in HEK293T (A), Hela (B), H1688 (C), mouse lung (D), mouse liver (E), rat lung (F), rat liver (G) whole cell lysates.

#### Anti-ELF4 Antibody - Background

KLH-conjugated synthetic peptide encompassing a sequence within the center region of human ELF4. The exact sequence is proprietary.