

Anti-EPHA3 Antibody
Rabbit polyclonal antibody to EPHA3
Catalog # AP59547**Specification**

Anti-EPHA3 Antibody - Product Information

Application	WB
Primary Accession	P29320
Other Accession	P29319
Reactivity	Human, Mouse, Rat, Zebrafish, Pig, Chicken, Bovine, Dog
Host	Rabbit
Clonality	Polyclonal
Calculated MW	110131

Anti-EPHA3 Antibody - Additional Information**Gene ID** 2042**Other Names**

ETK; ETK1; HEK; TYRO4; Ephrin type-A receptor 3; EPH-like kinase 4; EK4; hEK4; HEK; Human embryo kinase; Tyrosine-protein kinase TYRO4; Tyrosine-protein kinase receptor ETK1; Eph-like tyrosine kinase 1

Target/Specificity

Recognizes endogenous levels of EPHA3 protein.

Dilution

WB~~WB (1/500 - 1/1000)

Format

Liquid in 0.42% Potassium phosphate, 0.87% Sodium chloride, pH 7.3, 30% glycerol, and 0.09% (W/V) sodium azide.

Storage

Store at -20 °C. Stable for 12 months from date of receipt

Anti-EPHA3 Antibody - Protein Information**Name** EPHA3**Synonyms** ETK, ETK1, HEK, TYRO4**Function**

Receptor tyrosine kinase which binds promiscuously membrane- bound ephrin family ligands residing on adjacent cells, leading to contact-dependent bidirectional signaling into neighboring cells. The signaling pathway downstream of the receptor is referred to as forward signaling while the signaling pathway downstream of the ephrin ligand is referred to as reverse signaling. Highly

promiscuous for ephrin-A ligands it binds preferentially EFNA5. Upon activation by EFNA5 regulates cell-cell adhesion, cytoskeletal organization and cell migration. Plays a role in cardiac cells migration and differentiation and regulates the formation of the atrioventricular canal and septum during development probably through activation by EFNA1. Involved in the retinotectal mapping of neurons. May also control the segregation but not the guidance of motor and sensory axons during neuromuscular circuit development.

Cellular Location

[Isoform 1]: Cell membrane; Single-pass type I membrane protein

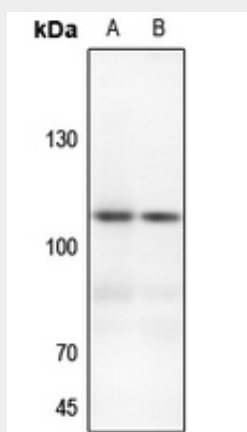
Tissue Location

Widely expressed. Highest level in placenta.

Anti-EPHA3 Antibody - Protocols

Provided below are standard protocols that you may find useful for product applications.

- [Western Blot](#)
- [Blocking Peptides](#)
- [Dot Blot](#)
- [Immunohistochemistry](#)
- [Immunofluorescence](#)
- [Immunoprecipitation](#)
- [Flow Cytometry](#)
- [Cell Culture](#)

Anti-EPHA3 Antibody - Images

Western blot analysis of EPHA3 expression in mouse liver (A), mouse kidney (B) whole cell lysates.

Anti-EPHA3 Antibody - Background

KLH-conjugated synthetic peptide encompassing a sequence within the C-term region of human EPHA3. The exact sequence is proprietary.