

**Anti-FASN Antibody**  
**Rabbit polyclonal antibody to FASN**  
**Catalog # AP59549****Specification**

---

**Anti-FASN Antibody - Product Information**

Application	<b>WB, IP</b>
Primary Accession	<a href="#">P49327</a>
Reactivity	<b>Human</b>
Host	<b>Rabbit</b>
Clonality	<b>Polyclonal</b>
Calculated MW	<b>273427</b>

**Anti-FASN Antibody - Additional Information****Gene ID** 2194**Other Names**

FAS; Fatty acid synthase S-acetyltransferase; [Acyl-carrier-protein] S-malonyltransferase; 3-oxoacyl-[acyl-carrier-protein] synthase; 3-oxoacyl-[acyl-carrier-protein] reductase; 3-hydroxyacyl-[acyl-carrier-protein] dehydratase; Enoyl-[acyl-carrier-protein] reductase; Oleoyl-[acyl-carrier-protein] hydrolase]

**Target/Specificity**

Recognizes endogenous levels of FASN protein.

**Dilution**

WB~~WB (1/500 - 1/1000), IP (1/10 - 1/100)

IP~~N/A

**Format**

Liquid in 0.42% Potassium phosphate, 0.87% Sodium chloride, pH 7.3, 30% glycerol, and 0.09% (W/V) sodium azide.

**Storage**

Store at -20 °C. Stable for 12 months from date of receipt

**Anti-FASN Antibody - Protein Information****Name** FASN**Synonyms** FAS**Function**

Fatty acid synthetase is a multifunctional enzyme that catalyzes the de novo biosynthesis of long-chain saturated fatty acids starting from acetyl-CoA and malonyl-CoA in the presence of NADPH. This multifunctional protein contains 7 catalytic activities and a site for the binding of the prosthetic group 4'-phosphopantetheine of the acyl carrier protein ([ACP]) domain.

**Cellular Location**

Cytoplasm. Melanosome. Note=Identified by mass spectrometry in melanosome fractions from stage I to stage IV

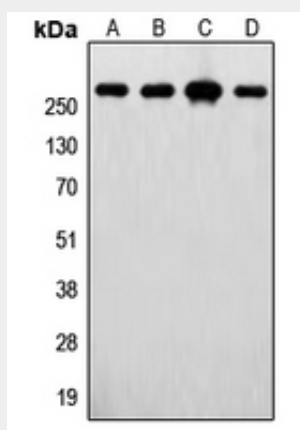
**Tissue Location**

Ubiquitous. Prominent expression in brain, lung, liver and mammary gland.

**Anti-FASN Antibody - Protocols**

Provided below are standard protocols that you may find useful for product applications.

- [Western Blot](#)
- [Blocking Peptides](#)
- [Dot Blot](#)
- [Immunohistochemistry](#)
- [Immunofluorescence](#)
- [Immunoprecipitation](#)
- [Flow Cytometry](#)
- [Cell Culture](#)

**Anti-FASN Antibody - Images**

Western blot analysis of FASN expression in MCF7 (A), U2OS (B), SKBR3 (C), HepG2 (D) whole cell lysates.

**Anti-FASN Antibody - Background**

KLH-conjugated synthetic peptide encompassing a sequence within the center region of human FASN. The exact sequence is proprietary.