

**Anti-Glypican 5 Antibody**  
**Rabbit polyclonal antibody to Glypican 5**  
**Catalog # AP59554****Specification**

---

**Anti-Glypican 5 Antibody - Product Information**

Application	WB
Primary Accession	<a href="#">P78333</a>
Other Accession	<a href="#">Q8CAL5</a>
Reactivity	Human, Mouse, Rat, Monkey, Bovine
Host	Rabbit
Clonality	Polyclonal
Calculated MW	63707

**Anti-Glypican 5 Antibody - Additional Information****Gene ID** 2262**Other Names**

Glypican-5

**Target/Specificity**

Recognizes endogenous levels of Glypican 5 protein.

**Dilution**

WB~~WB (1/500 - 1/1000), IP (1/10 - 1/100)

**Format**

Liquid in 0.42% Potassium phosphate, 0.87% Sodium chloride, pH 7.3, 30% glycerol, and 0.09% (W/V) sodium azide.

**Storage**

Store at -20 °C. Stable for 12 months from date of receipt

**Anti-Glypican 5 Antibody - Protein Information****Name** GPC5**Function**

Cell surface proteoglycan that bears heparan sulfate.

**Cellular Location**

Cell membrane; Lipid-anchor, GPI- anchor; Extracellular side

**Tissue Location**

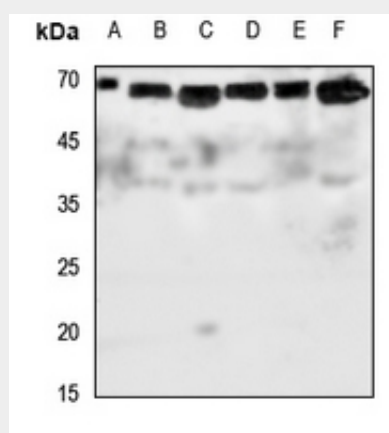
In adult, primarily expressed in the brain. Also detected in fetal brain, lung and liver.

## Anti-Glypican 5 Antibody - Protocols

Provided below are standard protocols that you may find useful for product applications.

- [Western Blot](#)
- [Blocking Peptides](#)
- [Dot Blot](#)
- [Immunohistochemistry](#)
- [Immunofluorescence](#)
- [Immunoprecipitation](#)
- [Flow Cytometry](#)
- [Cell Culture](#)

## Anti-Glypican 5 Antibody - Images



Western blot analysis of Glypican 5 expression in Hela (A), mouse brain (B), mouse lung (C), mouse liver (D), rat brain (E), rat lung (F) whole cell lysates.

## Anti-Glypican 5 Antibody - Background

KLH-conjugated synthetic peptide encompassing a sequence within the center region of human Glypican 5. The exact sequence is proprietary.