

Anti-GPR19 Antibody
Rabbit polyclonal antibody to GPR19
Catalog # AP59567**Specification**

Anti-GPR19 Antibody - Product Information

Application	WB, IP
Primary Accession	Q15760
Other Accession	Q61121
Reactivity	Human, Mouse, Rat, Monkey
Host	Rabbit
Clonality	Polyclonal
Calculated MW	47687

Anti-GPR19 Antibody - Additional Information**Gene ID** 2842**Other Names**

Probable G-protein coupled receptor 19; GPR-NGA

Target/Specificity

KLH-conjugated synthetic peptide encompassing a sequence within the C-term region of human GPR19. The exact sequence is proprietary.

Dilution

WB~~WB (1/500 - 1/1000), IP (1/10 - 1/100)

IP~~N/A

Format

Liquid in 0.42% Potassium phosphate, 0.87% Sodium chloride, pH 7.3, 30% glycerol, and 0.09% (W/V) sodium azide.

Storage

Store at -20 °C. Stable for 12 months from date of receipt

Anti-GPR19 Antibody - Protein Information**Name** GPR19**Function**

G-protein coupled receptor that plays a role in the regulation of circadian rhythms and energy metabolism. Participates in maintaining proper circadian gene expression in the suprachiasmatic nucleus (SCN), the locus of the master circadian clock in the brain (By similarity). May function as a coordinator of aging-associated metabolic dysfunction, stress response, DNA integrity management, and eventual senescence (PubMed:37239845). Upon binding to adropin, modulates mitochondrial energy metabolism via the p44/42-PDK4 signaling pathway,

influencing pyruvate dehydrogenase activity (By similarity).

Cellular Location

Cell membrane; Multi-pass membrane protein

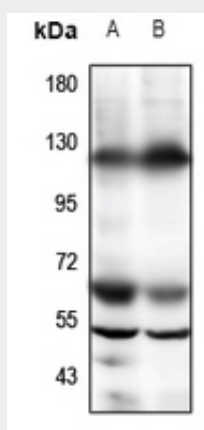
Tissue Location

Abundant expression in the brain.

Anti-GPR19 Antibody - Protocols

Provided below are standard protocols that you may find useful for product applications.

- [Western Blot](#)
- [Blocking Peptides](#)
- [Dot Blot](#)
- [Immunohistochemistry](#)
- [Immunofluorescence](#)
- [Immunoprecipitation](#)
- [Flow Cytometry](#)
- [Cell Culture](#)

Anti-GPR19 Antibody - Images

Western blot analysis of GPR19 expression in A375 (A), U87MG (B) whole cell lysates.

Anti-GPR19 Antibody - Background

KLH-conjugated synthetic peptide encompassing a sequence within the C-term region of human GPR19. The exact sequence is proprietary.