

**Anti-GSK3 alpha/beta Antibody**  
**Rabbit polyclonal antibody to GSK3 alpha/beta**  
**Catalog # AP59573****Specification**

---

**Anti-GSK3 alpha/beta Antibody - Product Information**

Application	WB, IHC
Primary Accession	<a href="#">P49840</a> , <a href="#">P49841</a>
Other Accession	<a href="#">Q2NL51</a> , <a href="#">Q9WV60</a>
Reactivity	Human, Mouse, Rat, Zebrafish
Host	Rabbit
Clonality	Polyclonal

**Anti-GSK3 alpha/beta Antibody - Additional Information****Other Names**

GSK3A; Glycogen synthase kinase-3 alpha; GSK-3 alpha; Serine/threonine-protein kinase GSK3A; GSK3B; Glycogen synthase kinase-3 beta; GSK-3 beta; Serine/threonine-protein kinase GSK3B

**Target/Specificity**

KLH-conjugated synthetic peptide encompassing a sequence within the center region of human GSK3 alpha/beta. The exact sequence is proprietary.

**Dilution**

WB~~WB (1/500 - 1/1000), IH (1/100 - 1/200)  
IHC~~1:100~500

**Format**

Liquid in 0.42% Potassium phosphate, 0.87% Sodium chloride, pH 7.3, 30% glycerol, and 0.09% (W/V) sodium azide.

**Storage**

Store at -20 °C. Stable for 12 months from date of receipt

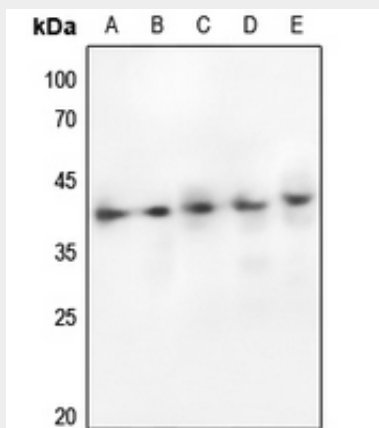
**Anti-GSK3 alpha/beta Antibody - Protein Information****Anti-GSK3 alpha/beta Antibody - Protocols**

Provided below are standard protocols that you may find useful for product applications.

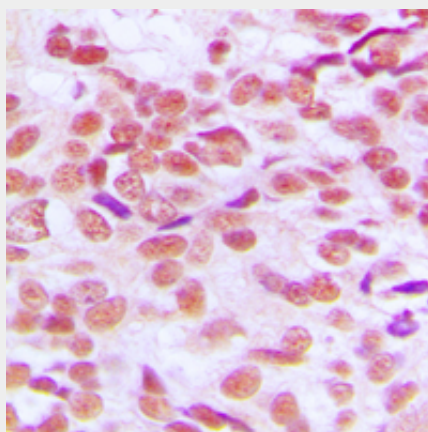
- [Western Blot](#)
- [Blocking Peptides](#)
- [Dot Blot](#)
- [Immunohistochemistry](#)
- [Immunofluorescence](#)
- [Immunoprecipitation](#)

- [Flow Cytometry](#)
- [Cell Culture](#)

### Anti-GSK3 alpha/beta Antibody - Images



Western blot analysis of GSK3 alpha/beta expression in HEK293T (A), Hela (B), mouse testis (C), mouse lung (D), rat testis (E) whole cell lysates.



Immunohistochemical analysis of GSK3 alpha/beta staining in human breast cancer formalin fixed paraffin embedded tissue section. The section was pre-treated using heat mediated antigen retrieval with sodium citrate buffer (pH 6.0). The section was then incubated with the antibody at room temperature and detected using an HRP conjugated compact polymer system. DAB was used as the chromogen. The section was then counterstained with haematoxylin and mounted with DPX.

### Anti-GSK3 alpha/beta Antibody - Background

KLH-conjugated synthetic peptide encompassing a sequence within the center region of human GSK3 alpha/beta. The exact sequence is proprietary.