

Anti-GUCY1B3 Antibody
Rabbit polyclonal antibody to GUCY1B3
Catalog # AP59575**Specification**

Anti-GUCY1B3 Antibody - Product Information

Application	WB, IH
Primary Accession	Q02153
Other Accession	O54865
Reactivity	Human, Mouse, Rat, Pig, Bovine, Drosophila
Host	Rabbit
Clonality	Polyclonal
Calculated MW	70514

Anti-GUCY1B3 Antibody - Additional Information**Gene ID** 2983**Other Names**

GUC1B3; GUCSB3; GUCY1B1; Guanylate cyclase soluble subunit beta-1; GCS-beta-1; Guanylate cyclase soluble subunit beta-3; GCS-beta-3; Soluble guanylate cyclase small subunit

Target/Specificity

Recognizes endogenous levels of GUCY1B3 protein.

Dilution

WB~~WB (1/500 - 1/1000), IH (1/100 - 1/200)

IH~~WB (1/500 - 1/1000), IH (1/100 - 1/200)

Format

Liquid in 0.42% Potassium phosphate, 0.87% Sodium chloride, pH 7.3, 30% glycerol, and 0.09% (W/V) sodium azide.

Storage

Store at -20 °C. Stable for 12 months from date of receipt

Anti-GUCY1B3 Antibody - Protein Information**Name** GUCY1B1 ([HGNC:4687](#))**Function**

Mediates responses to nitric oxide (NO) by catalyzing the biosynthesis of the signaling molecule cGMP.

Cellular Location

Cytoplasm {ECO:0000250|UniProtKB:P16068}.

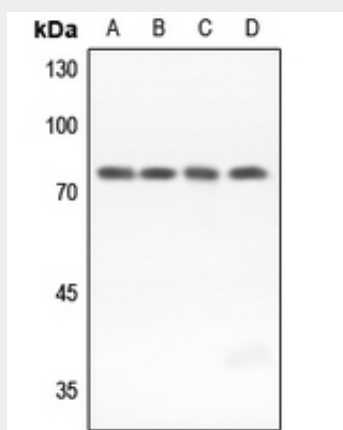
Tissue Location

Detected in brain cortex and cerebellum (at protein level).

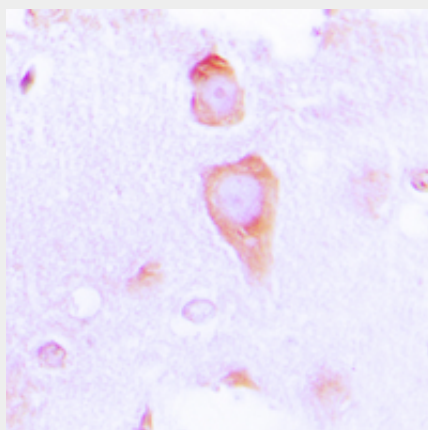
Anti-GUCY1B3 Antibody - Protocols

Provided below are standard protocols that you may find useful for product applications.

- [Western Blot](#)
- [Blocking Peptides](#)
- [Dot Blot](#)
- [Immunohistochemistry](#)
- [Immunofluorescence](#)
- [Immunoprecipitation](#)
- [Flow Cytometry](#)
- [Cell Culture](#)

Anti-GUCY1B3 Antibody - Images

Western blot analysis of GUCY1B3 expression in mouse lung (A), mouse kidney (B), rat lung (C), rat kidney (D) whole cell lysates.



Immunohistochemical analysis of GUCY1B3 staining in human brain formalin fixed paraffin embedded tissue section. The section was pre-treated using heat mediated antigen retrieval with sodium citrate buffer (pH 6.0). The section was then incubated with the antibody at room temperature and detected using an HRP conjugated compact polymer system. DAB was used as the chromogen. The section was then counterstained with haematoxylin and mounted with DPX.

Anti-GUCY1B3 Antibody - Background

KLH-conjugated synthetic peptide encompassing a sequence within the N-term region of human GUCY1B3. The exact sequence is proprietary.