

Anti-GYS1 Antibody
Rabbit polyclonal antibody to GYS1
Catalog # AP59576**Specification**

Anti-GYS1 Antibody - Product Information

Application	WB
Primary Accession	P13807
Other Accession	Q9Z1E4
Reactivity	Human, Mouse, Rat, Rabbit, Pig, Bovine
Host	Rabbit
Clonality	Polyclonal
Calculated MW	83786

Anti-GYS1 Antibody - Additional Information**Gene ID** 2997**Other Names**

GYS; Glycogen [starch] synthase, muscle

Target/Specificity

Recognizes endogenous levels of GYS1 protein.

Dilution

WB~~WB (1/500 - 1/1000)

Format

Liquid in 0.42% Potassium phosphate, 0.87% Sodium chloride, pH 7.3, 30% glycerol, and 0.09% (W/V) sodium azide.

Storage

Store at -20 °C. Stable for 12 months from date of receipt

Anti-GYS1 Antibody - Protein Information**Name** GYS1 ([HGNC:4706](#))**Synonyms** GYS**Function**

Glycogen synthase participates in the glycogen biosynthetic process along with glycogenin and glycogen branching enzyme. Extends the primer composed of a few glucose units formed by glycogenin by adding new glucose units to it. In this context, glycogen synthase transfers the glycosyl residue from UDP-Glc to the non-reducing end of alpha-1,4-glucan.

Tissue Location

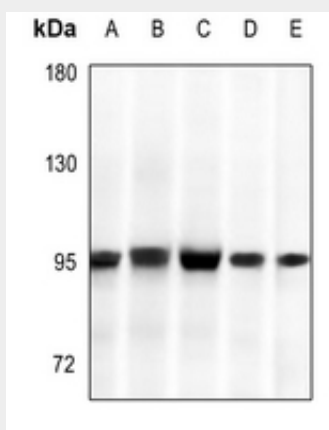
Expressed in skeletal muscle and most other cell types where glycogen is present.

Anti-GYS1 Antibody - Protocols

Provided below are standard protocols that you may find useful for product applications.

- [Western Blot](#)
- [Blocking Peptides](#)
- [Dot Blot](#)
- [Immunohistochemistry](#)
- [Immunofluorescence](#)
- [Immunoprecipitation](#)
- [Flow Cytometry](#)
- [Cell Culture](#)

Anti-GYS1 Antibody - Images



Western blot analysis of GYS1 expression in HEK293T (A), LO2 (B), HepG2 (C), AML12 (D), H9C2 (E) whole cell lysates.

Anti-GYS1 Antibody - Background

KLH-conjugated synthetic peptide encompassing a sequence within the C-term region of human GYS1. The exact sequence is proprietary.