

DDI2 Antibody (Center)
Affinity Purified Rabbit Polyclonal Antibody (Pab)
Catalog # AP5959c**Specification**

DDI2 Antibody (Center) - Product Information

Application	WB,E
Primary Accession	Q5TDH0
Other Accession	A2ADY9 , NP_115717.3
Reactivity	Human, Mouse
Host	Rabbit
Clonality	Polyclonal
Isotype	Rabbit IgG
Calculated MW	44523
Antigen Region	167-196

DDI2 Antibody (Center) - Additional Information**Gene ID** 84301**Other Names**

Protein DDI1 homolog 2, DDI2

Target/Specificity

This DDI2 antibody is generated from rabbits immunized with a KLH conjugated synthetic peptide between 167-196 amino acids from the Central region of human DDI2.

Dilution

WB~~1:500

E~~Use at an assay dependent concentration.

Format

Purified polyclonal antibody supplied in PBS with 0.09% (W/V) sodium azide. This antibody is purified through a protein A column, followed by peptide affinity purification.

Storage

Maintain refrigerated at 2-8°C for up to 2 weeks. For long term storage store at -20°C in small aliquots to prevent freeze-thaw cycles.

Precautions

DDI2 Antibody (Center) is for research use only and not for use in diagnostic or therapeutic procedures.

DDI2 Antibody (Center) - Protein Information**Name** DDI2 ([HGNC:24578](#))**Function** Aspartic protease that mediates the cleavage of NFE2L1/NRF1 at 'Leu-104', thereby

promoting release of NFE2L1/NRF1 from the endoplasmic reticulum membrane (PubMed:[27528193](#), PubMed:[27676298](#)). Ubiquitination of NFE2L1/NRF1 is a prerequisite for cleavage, suggesting that DDI2 specifically recognizes and binds ubiquitinated NFE2L1/NRF1 (PubMed:[27528193](#)). Seems to act as a proteasomal shuttle which links the proteasome and replication fork proteins like RTF2 (Probable). Required, with DDI1, for cellular survival following replication stress. Together or redundantly with DDI1, removes RTF2 from stalled forks to allow cell cycle progression after replication stress and maintains genome integrity (PubMed:[29290612](#)).

Cellular Location

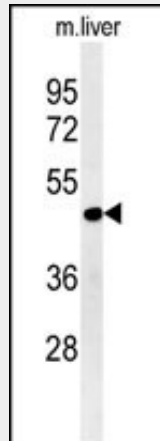
Cytoplasm, cytosol. Chromosome

DDI2 Antibody (Center) - Protocols

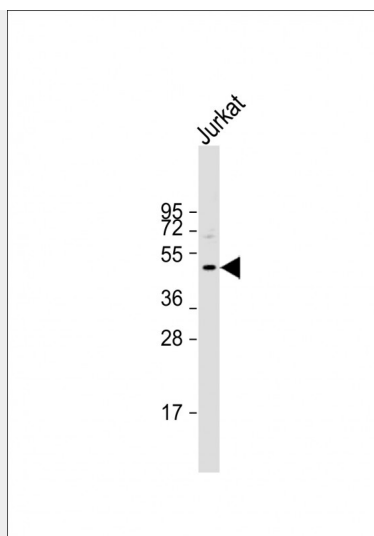
Provided below are standard protocols that you may find useful for product applications.

- [Western Blot](#)
- [Blocking Peptides](#)
- [Dot Blot](#)
- [Immunohistochemistry](#)
- [Immunofluorescence](#)
- [Immunoprecipitation](#)
- [Flow Cytometry](#)
- [Cell Culture](#)

DDI2 Antibody (Center) - Images



DDI2 Antibody (Center) (Cat. #AP5959c) western blot analysis in mouse liver tissue lysates (15ug/lane). This demonstrates the DDI2 antibody detected DDI2 protein (arrow).



Anti-DDI2 Antibody (Center) at 1:500 dilution + Jurkat whole cell lysate Lysates/proteins at 20 μ g per lane. Secondary Goat Anti-Rabbit IgG, (H+L), Peroxidase conjugated at 1/10000 dilution. Predicted band size : 45 kDa Blocking/Dilution buffer: 5% NFDM/TBST.