

Anti-LMX1B Antibody
Rabbit polyclonal antibody to LMX1B
Catalog # AP59609**Specification**

Anti-LMX1B Antibody - Product Information

Application	WB, IP, IHC
Primary Accession	O60663
Reactivity	Human, Pig, Bovine, Dog
Host	Rabbit
Clonality	Polyclonal
Calculated MW	44917

Anti-LMX1B Antibody - Additional Information**Gene ID** 4010**Other Names**

LIM homeobox transcription factor 1-beta; LIM/homeobox protein 1.2; LMX-1.2; LIM/homeobox protein LMX1B

Target/Specificity

Recognizes endogenous levels of LMX1B protein.

Dilution

WB~~WB (1/500 - 1/1000), IH (1/100 - 1/200), IP (1/10 - 1/100)

IP~~N/A

IHC~~1:100~500

Format

Liquid in 0.42% Potassium phosphate, 0.87% Sodium chloride, pH 7.3, 30% glycerol, and 0.09% (W/V) sodium azide.

Storage

Store at -20 °C. Stable for 12 months from date of receipt

Anti-LMX1B Antibody - Protein Information**Name** LMX1B**Function**

Transcription factor involved in the regulation of podocyte- expressed genes (PubMed:24042019, PubMed:28059119). Essential for the specification of dorsal limb fate at both the zeugopodal and autopodal levels.

Cellular Location

Nucleus {ECO:0000255|PROSITE-ProRule:PRU00108}.

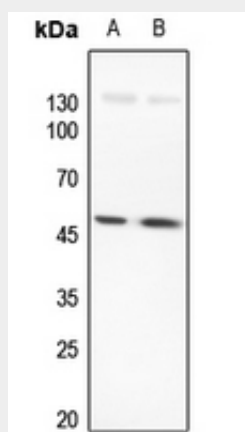
Tissue Location

Expressed in most tissues. Highest levels in testis, thyroid, duodenum, skeletal muscle, and pancreatic islets

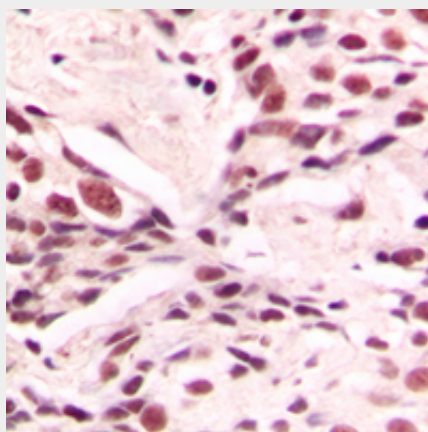
Anti-LMX1B Antibody - Protocols

Provided below are standard protocols that you may find useful for product applications.

- [Western Blot](#)
- [Blocking Peptides](#)
- [Dot Blot](#)
- [Immunohistochemistry](#)
- [Immunofluorescence](#)
- [Immunoprecipitation](#)
- [Flow Cytometry](#)
- [Cell Culture](#)

Anti-LMX1B Antibody - Images

Western blot analysis of LMX1B expression in Hela (A), H446 (B) whole cell lysates.



Immunohistochemical analysis of LMX1B staining in human breast cancer formalin fixed paraffin embedded tissue section. The section was pre-treated using heat mediated antigen retrieval with sodium citrate buffer (pH 6.0). The section was then incubated with the antibody at room temperature and detected using an HRP conjugated compact polymer system. DAB was used as the chromogen. The section was then counterstained with haematoxylin and mounted with DPX.

Anti-LMX1B Antibody - Background

KLH-conjugated synthetic peptide encompassing a sequence within the center region of human LMX1B. The exact sequence is proprietary.