

**SHISA2 Antibody (C-term)**  
**Affinity Purified Rabbit Polyclonal Antibody (Pab)**  
**Catalog # AP5960b****Specification**

---

**SHISA2 Antibody (C-term) - Product Information**

Application	WB, IHC-P,E
Primary Accession	<a href="#">Q6UWI4</a>
Other Accession	<a href="#">NP_001007539.1</a>
Reactivity	Human, Mouse
Host	Rabbit
Clonality	Polyclonal
Isotype	Rabbit IgG
Calculated MW	31375
Antigen Region	259-288

**SHISA2 Antibody (C-term) - Additional Information****Gene ID** 387914**Other Names**

Protein shisa-2 homolog, Transmembrane protein 46, SHISA2, C13orf13, TMEM46

**Target/Specificity**

This SHISA2 antibody is generated from rabbits immunized with a KLH conjugated synthetic peptide between 259-288 amino acids from the C-terminal region of human SHISA2.

**Dilution**

WB~~1:1000

IHC-P~~1:50~100

**Format**

Purified polyclonal antibody supplied in PBS with 0.09% (W/V) sodium azide. This antibody is purified through a protein A column, followed by peptide affinity purification.

**Storage**

Maintain refrigerated at 2-8°C for up to 2 weeks. For long term storage store at -20°C in small aliquots to prevent freeze-thaw cycles.

**Precautions**

SHISA2 Antibody (C-term) is for research use only and not for use in diagnostic or therapeutic procedures.

**SHISA2 Antibody (C-term) - Protein Information****Name** SHISA2**Synonyms** C13orf13, TMEM46

**Function** Plays an essential role in the maturation of presomitic mesoderm cells by individual attenuation of both FGF and WNT signaling.

**Cellular Location**

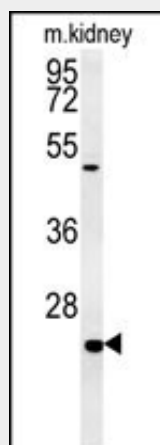
Endoplasmic reticulum membrane; Single-pass type I membrane protein

**SHISA2 Antibody (C-term) - Protocols**

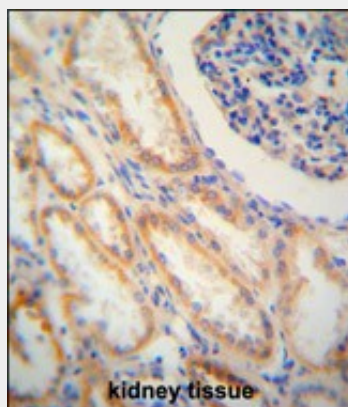
Provided below are standard protocols that you may find useful for product applications.

- [Western Blot](#)
- [Blocking Peptides](#)
- [Dot Blot](#)
- [Immunohistochemistry](#)
- [Immunofluorescence](#)
- [Immunoprecipitation](#)
- [Flow Cytometry](#)
- [Cell Culture](#)

**SHISA2 Antibody (C-term) - Images**



SHISA2 Antibody (C-term) (Cat. #AP5960b) western blot analysis in mouse kidney tissue lysates (15ug/lane). This demonstrates the SHISA2 antibody detected SHISA2 protein (arrow).



SHISA2 antibody (C-term) (Cat. #AP5960b) immunohistochemistry analysis in formalin fixed and paraffin embedded human kidney tissue followed by peroxidase conjugation of the secondary

antibody and DAB staining. This data demonstrates the use of the SHISA2 antibody (C-term) for immunohistochemistry. Clinical relevance has not been evaluated.