

**Anti-MAZ Antibody**  
**Rabbit polyclonal antibody to MAZ**  
**Catalog # AP59620****Specification**

---

**Anti-MAZ Antibody - Product Information**

Application	WB
Primary Accession	<a href="#">P56270</a>
Other Accession	<a href="#">P56671</a>
Reactivity	Human, Mouse, Rat
Host	Rabbit
Clonality	Polyclonal
Calculated MW	48608

**Anti-MAZ Antibody - Additional Information****Gene ID** 4150**Other Names**

ZNF801; Myc-associated zinc finger protein; MAZI; Pur-1; Purine-binding transcription factor; Serum amyloid A-activating factor-1; SAF-1; Transcription factor Zif87; ZF87; Zinc finger protein 801

**Target/Specificity**

Recognizes endogenous levels of MAZ protein.

**Dilution**

WB~~WB (1/500 - 1/1000)

**Format**

Liquid in 0.42% Potassium phosphate, 0.87% Sodium chloride, pH 7.3, 30% glycerol, and 0.09% (W/V) sodium azide.

**Storage**

Store at -20 °C. Stable for 12 months from date of receipt

**Anti-MAZ Antibody - Protein Information****Name** MAZ**Synonyms** ZNF801**Function**

Transcriptional regulator, potentially with dual roles in transcription initiation and termination.

**Cellular Location**

Nucleus. Note=In brains of Alzheimer disease patients, present in a plaque-like structures

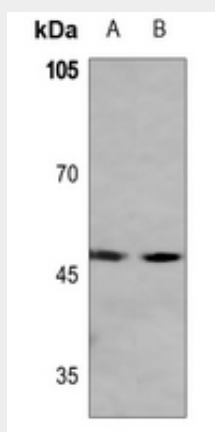
**Tissue Location**

Present in kidney, liver and brain. In the brain, highest levels are found in motor cortex and midfrontal cortex (at protein level).

**Anti-MAZ Antibody - Protocols**

Provided below are standard protocols that you may find useful for product applications.

- [Western Blot](#)
- [Blocking Peptides](#)
- [Dot Blot](#)
- [Immunohistochemistry](#)
- [Immunofluorescence](#)
- [Immunoprecipitation](#)
- [Flow Cytometry](#)
- [Cell Culture](#)

**Anti-MAZ Antibody - Images**

Western blot analysis of MAZ expression in PC12 (A), rat lung (B) whole cell lysates.

**Anti-MAZ Antibody - Background**

KLH-conjugated synthetic peptide encompassing a sequence within the center region of human MAZ. The exact sequence is proprietary.