

Anti-MMP12 Antibody
Rabbit polyclonal antibody to MMP12
Catalog # AP59624**Specification**

Anti-MMP12 Antibody - Product Information

Application	WB
Primary Accession	P39900
Reactivity	Human
Host	Rabbit
Clonality	Polyclonal
Calculated MW	54002

Anti-MMP12 Antibody - Additional Information**Gene ID** 4321**Other Names**

HME; Macrophage metalloelastase; MME; Macrophage elastase; ME; hME; Matrix metalloproteinase-12; MMP-12

Target/Specificity

KLH-conjugated synthetic peptide encompassing a sequence within the center region of human MMP12. The exact sequence is proprietary.

Dilution

WB~~WB (1/500 - 1/1000)

Format

Liquid in 0.42% Potassium phosphate, 0.87% Sodium chloride, pH 7.3, 30% glycerol, and 0.09% (W/V) sodium azide.

Storage

Store at -20 °C. Stable for 12 months from date of receipt

Anti-MMP12 Antibody - Protein Information**Name** MMP12**Synonyms** HME**Function**

May be involved in tissue injury and remodeling. Has significant elastolytic activity. Can accept large and small amino acids at the P1' site, but has a preference for leucine. Aromatic or hydrophobic residues are preferred at the P1 site, with small hydrophobic residues (preferably alanine) occupying P3.

Cellular Location

Secreted, extracellular space, extracellular matrix

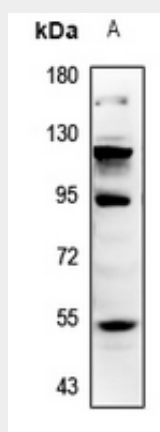
Tissue Location

Found in alveolar macrophages but not in peripheral blood monocytes

Anti-MMP12 Antibody - Protocols

Provided below are standard protocols that you may find useful for product applications.

- [Western Blot](#)
- [Blocking Peptides](#)
- [Dot Blot](#)
- [Immunohistochemistry](#)
- [Immunofluorescence](#)
- [Immunoprecipitation](#)
- [Flow Cytometry](#)
- [Cell Culture](#)

Anti-MMP12 Antibody - Images

Western blot analysis of MMP12 expression in HEK293T (A) whole cell lysates.

Anti-MMP12 Antibody - Background

KLH-conjugated synthetic peptide encompassing a sequence within the center region of human MMP12. The exact sequence is proprietary.