

Anti-IKB alpha Antibody
Rabbit polyclonal antibody to IKB alpha
Catalog # AP59636**Specification**

Anti-IKB alpha Antibody - Product Information

Application	WB, IF/IC, IHC
Primary Accession	P25963
Other Accession	Q9Z1E3
Reactivity	Human, Mouse, Rat, Pig, Bovine, SARS
Host	Rabbit
Clonality	Polyclonal
Calculated MW	35609

Anti-IKB alpha Antibody - Additional Information**Gene ID** 4792**Other Names**

IKBA; MAD3; NFKBI; NF-kappa-B inhibitor alpha; I-kappa-B-alpha; IKB-alpha; IkappaBalpha; Major histocompatibility complex enhancer-binding protein MAD3

Target/Specificity

Recognizes endogenous levels of IKB alpha protein.

Dilution

WB~~WB (1/500 - 1/1000), IH (1/100 - 1/200), IF/IC (1/100 - 1/500)

IF/IC~~N/A

IHC~~1:100~500

Format

Liquid in 0.42% Potassium phosphate, 0.87% Sodium chloride, pH 7.3, 30% glycerol, and 0.09% (W/V) sodium azide.

Storage

Store at -20 °C.Stable for 12 months from date of receipt

Anti-IKB alpha Antibody - Protein Information**Name** NFKBIA**Synonyms** IKBA, MAD3, NFKBI**Function**

Inhibits the activity of dimeric NF-kappa-B/REL complexes by trapping REL (RELA/p65 and NFKB1/p50) dimers in the cytoplasm by masking their nuclear localization signals (PubMed:1493333, PubMed:36651806, PubMed:36651806)

href="http://www.uniprot.org/citations/7479976" target="_blank">7479976). On cellular stimulation by immune and pro-inflammatory responses, becomes phosphorylated promoting ubiquitination and degradation, enabling the dimeric RELA to translocate to the nucleus and activate transcription (PubMed:7479976, PubMed:7628694, PubMed:7796813, PubMed:7878466).

Cellular Location

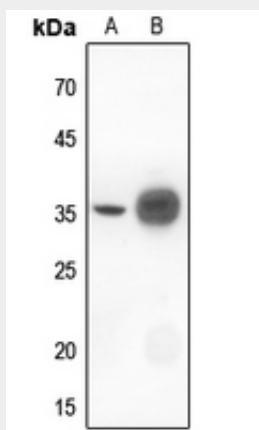
Cytoplasm. Nucleus. Note=Shuttles between the nucleus and the cytoplasm by a nuclear localization signal (NLS) and a CRM1-dependent nuclear export.

Anti-IKB alpha Antibody - Protocols

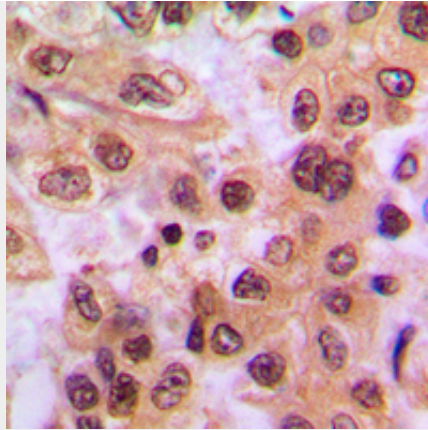
Provided below are standard protocols that you may find useful for product applications.

- [Western Blot](#)
- [Blocking Peptides](#)
- [Dot Blot](#)
- [Immunohistochemistry](#)
- [Immunofluorescence](#)
- [Immunoprecipitation](#)
- [Flow Cytometry](#)
- [Cell Culture](#)

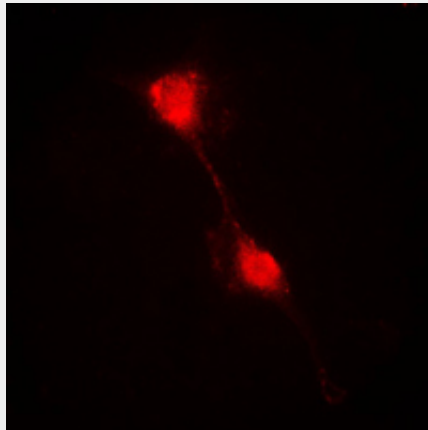
Anti-IKB alpha Antibody - Images



Western blot analysis of IKB alpha expression in rat kidney (A), rat muscle (B) whole cell lysates.



Immunohistochemical analysis of IKB alpha staining in human breast cancer formalin fixed paraffin embedded tissue section. The section was pre-treated using heat mediated antigen retrieval with sodium citrate buffer (pH 6.0). The section was then incubated with the antibody at room temperature and detected using an HRP conjugated compact polymer system. DAB was used as the chromogen. The section was then counterstained with haematoxylin and mounted with DPX.



Immunofluorescent analysis of IKB alpha staining in HepG2 cells. Formalin-fixed cells were permeabilized with 0.1% Triton X-100 in TBS for 5-10 minutes and blocked with 3% BSA-PBS for 30 minutes at room temperature. Cells were probed with the primary antibody in 3% BSA-PBS and incubated overnight at 4 °C in a humidified chamber. Cells were washed with PBST and incubated with a DyLight 594-conjugated secondary antibody (red) in PBS at room temperature in the dark.

Anti- IKB alpha Antibody - Background

KLH-conjugated synthetic peptide encompassing a sequence within the N-term region of human IKB alpha. The exact sequence is proprietary.