

Anti-IKB beta Antibody
Rabbit polyclonal antibody to IKB beta
Catalog # AP59638**Specification**

Anti-IKB beta Antibody - Product Information

Application	WB
Primary Accession	Q15653
Other Accession	Q60778
Reactivity	Human, Mouse, Rat, Bovine
Host	Rabbit
Clonality	Polyclonal
Calculated MW	37771

Anti-IKB beta Antibody - Additional Information**Gene ID** 4793**Other Names**

IKBB; TRIP9; NF-kappa-B inhibitor beta; NF-kappa-BIB; I-kappa-B-beta; Ikb-B; Ikb-beta; IkappaBbeta; Thyroid receptor-interacting protein 9; TR-interacting protein 9; TRIP-9

Target/Specificity

Recognizes endogenous levels of IKB beta protein.

Dilution

WB~~WB (1/500 - 1/1000)

Format

Liquid in 0.42% Potassium phosphate, 0.87% Sodium chloride, pH 7.3, 30% glycerol, and 0.09% (W/V) sodium azide.

Storage

Store at -20 °C. Stable for 12 months from date of receipt

Anti-IKB beta Antibody - Protein Information**Name** NFKBIB**Synonyms** IKBB, TRIP9**Function**

Inhibits NF-kappa-B by complexing with and trapping it in the cytoplasm. However, the unphosphorylated form resynthesized after cell stimulation is able to bind NF-kappa-B allowing its transport to the nucleus and protecting it to further NFKBIA-dependent inactivation. Association with inhibitor kappa B-interacting NKIRAS1 and NKIRAS2 prevent its phosphorylation rendering it more resistant to degradation, explaining its slower degradation.

Cellular Location

Cytoplasm. Nucleus.

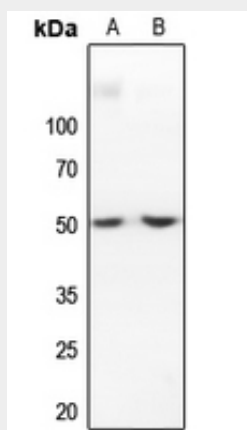
Tissue Location

Expressed in all tissues examined.

Anti-IKB beta Antibody - Protocols

Provided below are standard protocols that you may find useful for product applications.

- [Western Blot](#)
- [Blocking Peptides](#)
- [Dot Blot](#)
- [Immunohistochemistry](#)
- [Immunofluorescence](#)
- [Immunoprecipitation](#)
- [Flow Cytometry](#)
- [Cell Culture](#)

Anti-IKB beta Antibody - Images

Western blot analysis of IKB beta expression in mouse liver (A), rat liver (B) whole cell lysates.

Anti-IKB beta Antibody - Background

KLH-conjugated synthetic peptide encompassing a sequence within the N-term region of human IKB beta. The exact sequence is proprietary.