

Anti-RKIP Antibody
Rabbit polyclonal antibody to RKIP
Catalog # AP59648**Specification**

Anti-RKIP Antibody - Product Information

| | |
|-------------------|------------------------|
| Application | WB, IF/IC |
| Primary Accession | P30086 |
| Other Accession | P70296 |
| Reactivity | Human, Mouse, Rat |
| Host | Rabbit |
| Clonality | Polyclonal |
| Calculated MW | 21057 |

Anti-RKIP Antibody - Additional Information**Gene ID** 5037**Other Names**

PBP; PEBP; Phosphatidylethanolamine-binding protein 1; PEBP-1; HCNPpp; Neuropolypeptide h3; Prostatic-binding protein; Raf kinase inhibitor protein; RKIP

Target/Specificity

KLH-conjugated synthetic peptide encompassing a sequence within the center region of human RKIP. The exact sequence is proprietary.

DilutionWB~~WB (1/500 - 1/1000), IF/IC (1/100 - 1/500)
IF/IC~~N/A**Format**

Liquid in 0.42% Potassium phosphate, 0.87% Sodium chloride, pH 7.3, 30% glycerol, and 0.09% (W/V) sodium azide.

Storage

Store at -20 °C. Stable for 12 months from date of receipt

Anti-RKIP Antibody - Protein Information**Name** PEBP1**Synonyms** PBP, PEBP**Function**

Binds ATP, opioids and phosphatidylethanolamine. Has lower affinity for phosphatidylinositol and phosphatidylcholine. Serine protease inhibitor which inhibits thrombin, neuropsin and chymotrypsin but not trypsin, tissue type plasminogen activator and elastase (By similarity). Inhibits the kinase activity of RAF1 by inhibiting its activation and by dissociating the RAF1/MEK

complex and acting as a competitive inhibitor of MEK phosphorylation.

Cellular Location

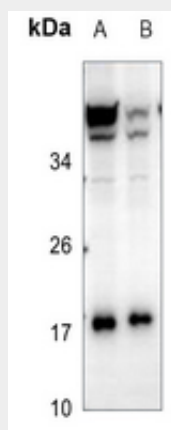
Cytoplasm.

Anti-RKIP Antibody - Protocols

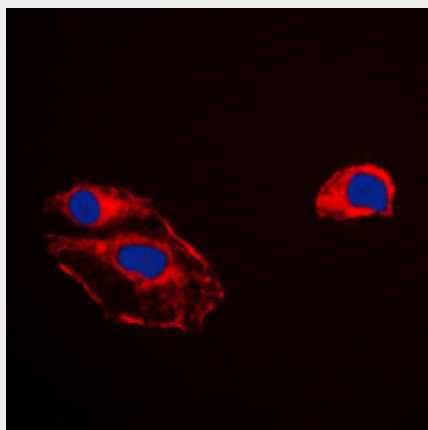
Provided below are standard protocols that you may find useful for product applications.

- [Western Blot](#)
- [Blocking Peptides](#)
- [Dot Blot](#)
- [Immunohistochemistry](#)
- [Immunofluorescence](#)
- [Immunoprecipitation](#)
- [Flow Cytometry](#)
- [Cell Culture](#)

Anti-RKIP Antibody - Images



Western blot analysis of RKIP expression in HEK293T (A), HepG2 (B) whole cell lysates.



Immunofluorescent analysis of RKIP staining in HepG2 cells. Formalin-fixed cells were permeabilized with 0.1% Triton X-100 in TBS for 5-10 minutes and blocked with 3% BSA-PBS for 30 minutes at room temperature. Cells were probed with the primary antibody in 3% BSA-PBS and incubated overnight at 4 °C in a humidified chamber. Cells were washed with PBST and incubated

with a DyLight 594-conjugated secondary antibody (red) in PBS at room temperature in the dark. DAPI was used to stain the cell nuclei (blue).

Anti-RKIP Antibody - Background

KLH-conjugated synthetic peptide encompassing a sequence within the center region of human RKIP. The exact sequence is proprietary.