

Anti-PAK3 (pS154) Antibody
Rabbit polyclonal antibody to PAK3 (pS154)
Catalog # AP59652

Specification

Anti-PAK3 (pS154) Antibody - Product Information

Application	WB
Primary Accession	O75914
Other Accession	Q61036
Reactivity	Human, Mouse, Rat, Monkey
Host	Rabbit
Clonality	Polyclonal
Calculated MW	62310

Anti-PAK3 (pS154) Antibody - Additional Information

Gene ID 5063

Other Names

OPHN3; Serine/threonine-protein kinase PAK 3; Beta-PAK; Oligophrenin-3; p21-activated kinase 3; PAK-3

Target/Specificity

Recognizes endogenous levels of PAK3 (pS154) protein.

Dilution

WB~~WB (1/500 - 1/1000)

Format

Liquid in 0.42% Potassium phosphate, 0.87% Sodium chloride, pH 7.3, 30% glycerol, and 0.09% (W/V) sodium azide.

Storage

Store at -20 °C. Stable for 12 months from date of receipt

Anti-PAK3 (pS154) Antibody - Protein Information

Name PAK3

Synonyms OPHN3

Function

Serine/threonine protein kinase that plays a role in a variety of different signaling pathways including cytoskeleton regulation, cell migration, or cell cycle regulation. Plays a role in dendrite spine morphogenesis as well as synapse formation and plasticity. Acts as a downstream effector of the small GTPases CDC42 and RAC1. Activation by the binding of active CDC42 and RAC1 results in a conformational change and a subsequent autophosphorylation on several serine and/or threonine residues. Phosphorylates MAPK4 and MAPK6 and activates the downstream target

MAPKAPK5, a regulator of F-actin polymerization and cell migration. Additionally, phosphorylates TNNI3/troponin I to modulate calcium sensitivity and relaxation kinetics of thin myofilaments. May also be involved in early neuronal development. In hippocampal neurons, necessary for the formation of dendritic spines and excitatory synapses; this function is dependent on kinase activity and may be exerted by the regulation of actomyosin contractility through the phosphorylation of myosin II regulatory light chain (MLC) (By similarity).

Cellular Location

Cytoplasm.

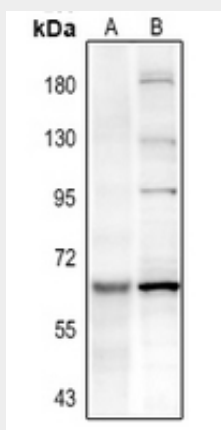
Tissue Location

Restricted to the nervous system. Highly expressed in postmitotic neurons of the developing and postnatal cerebral cortex and hippocampus.

Anti-PAK3 (pS154) Antibody - Protocols

Provided below are standard protocols that you may find useful for product applications.

- [Western Blot](#)
- [Blocking Peptides](#)
- [Dot Blot](#)
- [Immunohistochemistry](#)
- [Immunofluorescence](#)
- [Immunoprecipitation](#)
- [Flow Cytometry](#)
- [Cell Culture](#)

Anti-PAK3 (pS154) Antibody - Images

Western blot analysis of PAK3 (pS154) expression in BV2 (A), SKOV3 (B), U87MG (C) whole cell lysates.

Anti-PAK3 (pS154) Antibody - Background

KLH-conjugated synthetic peptide encompassing a sequence within the center region of human PAK3. The exact sequence is proprietary.