

Anti-PDGFA Antibody
Rabbit polyclonal antibody to PDGFA
Catalog # AP59654**Specification**

Anti-PDGFA Antibody - Product Information

Application	WB, IHC
Primary Accession	P04085
Other Accession	P20033
Reactivity	Human, Mouse, Rat, Rabbit
Host	Rabbit
Clonality	Polyclonal
Calculated MW	24043

Anti-PDGFA Antibody - Additional Information**Gene ID** 5154**Other Names**

PDGF1; Platelet-derived growth factor subunit A; PDGF subunit A; PDGF-1; Platelet-derived growth factor A chain; Platelet-derived growth factor alpha polypeptide

Target/Specificity

Recognizes endogenous levels of PDGFA protein.

Dilution

WB~~WB (1/500 - 1/1000), IH (1/100 - 1/200)

IHC~~1:100~500

Format

Liquid in 0.42% Potassium phosphate, 0.87% Sodium chloride, pH 7.3, 30% glycerol, and 0.09% (W/V) sodium azide.

Storage

Store at -20 °C.Stable for 12 months from date of receipt

Anti-PDGFA Antibody - Protein Information**Name** PDGFA**Synonyms** PDGF1**Function**

Growth factor that plays an essential role in the regulation of embryonic development, cell proliferation, cell migration, survival and chemotaxis. Potent mitogen for cells of mesenchymal origin. Required for normal lung alveolar septum formation during embryogenesis, normal development of the gastrointestinal tract, normal development of Leydig cells and spermatogenesis. Required for normal oligodendrocyte development and normal myelination in

the spinal cord and cerebellum. Plays an important role in wound healing. Signaling is modulated by the formation of heterodimers with PDGFB (By similarity).

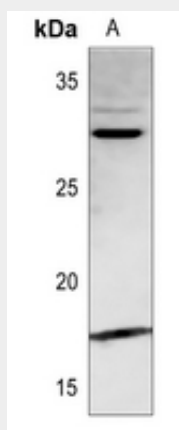
Cellular Location

Secreted. Note=Released by platelets upon wounding

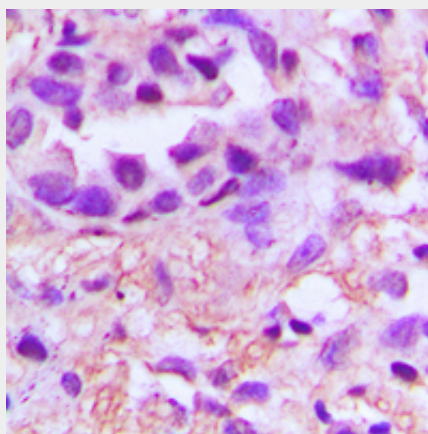
Anti-PDGFA Antibody - Protocols

Provided below are standard protocols that you may find useful for product applications.

- [Western Blot](#)
- [Blocking Peptides](#)
- [Dot Blot](#)
- [Immunohistochemistry](#)
- [Immunofluorescence](#)
- [Immunoprecipitation](#)
- [Flow Cytometry](#)
- [Cell Culture](#)

Anti-PDGFA Antibody - Images

Western blot analysis of PDGFA expression in mouse lung (A) whole cell lysates.



Immunohistochemical analysis of PDGFA staining in human lung cancer formalin fixed paraffin embedded tissue section. The section was pre-treated using heat mediated antigen retrieval with sodium citrate buffer (pH 6.0). The section was then incubated with the antibody at room

temperature and detected using an HRP conjugated compact polymer system. DAB was used as the chromogen. The section was then counterstained with haematoxylin and mounted with DPX.

Anti-PDGFA Antibody - Background

KLH-conjugated synthetic peptide encompassing a sequence within the center region of human PDGFA. The exact sequence is proprietary.