

Anti-PLC gamma 1 Antibody
Rabbit polyclonal antibody to PLC gamma 1
Catalog # AP59664**Specification**

Anti-PLC gamma 1 Antibody - Product Information

| | |
|-------------------|-----------------------------------|
| Application | WB, IHC |
| Primary Accession | P19174 |
| Other Accession | Q62077 |
| Reactivity | Human, Mouse, Rat, Monkey, Bovine |
| Host | Rabbit |
| Clonality | Polyclonal |
| Calculated MW | 148532 |

Anti-PLC gamma 1 Antibody - Additional Information**Gene ID** 5335**Other Names**

PLC1; 1-phosphatidylinositol 4, 5-bisphosphate phosphodiesterase gamma-1; PLC-148; Phosphoinositide phospholipase C-gamma-1; Phospholipase C-II; PLC-II; Phospholipase C-gamma-1; PLC-gamma-1

Target/Specificity

KLH-conjugated synthetic peptide encompassing a sequence within the center region of human PLC gamma 1. The exact sequence is proprietary.

Dilution

WB~~WB (1/500 - 1/1000), IH (1/100 - 1/200)
IHC~~1:100~500

Format

Liquid in 0.42% Potassium phosphate, 0.87% Sodium chloride, pH 7.3, 30% glycerol, and 0.09% (W/V) sodium azide.

Storage

Store at -20 °C. Stable for 12 months from date of receipt

Anti-PLC gamma 1 Antibody - Protein Information**Name** PLCG1 ([HGNC:9065](#))**Synonyms** PLC1**Function**

Mediates the production of the second messenger molecules diacylglycerol (DAG) and inositol 1,4,5-trisphosphate (IP3). Plays an important role in the regulation of intracellular signaling cascades. Becomes activated in response to ligand-mediated activation of receptor-type tyrosine

kinases, such as PDGFRA, PDGFRB, EGFR, FGFR1, FGFR2, FGFR3 and FGFR4 (By similarity). Plays a role in actin reorganization and cell migration (PubMed:17229814). Guanine nucleotide exchange factor that binds the GTPase DNM1 and catalyzes the dissociation of GDP, allowing a GTP molecule to bind in its place, therefore enhancing DNM1-dependent endocytosis (By similarity).

Cellular Location

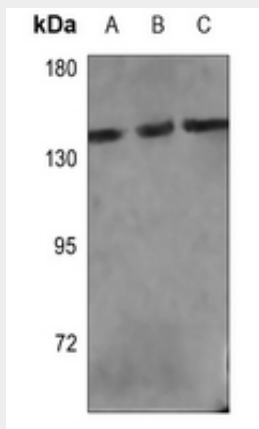
Cell projection, lamellipodium. Cell projection, ruffle. Note= Rapidly redistributed to ruffles and lamellipodia structures in response to epidermal growth factor (EGF) treatment.

Anti-PLC gamma 1 Antibody - Protocols

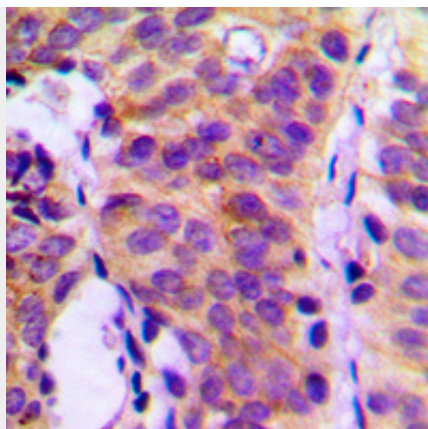
Provided below are standard protocols that you may find useful for product applications.

- [Western Blot](#)
- [Blocking Peptides](#)
- [Dot Blot](#)
- [Immunohistochemistry](#)
- [Immunofluorescence](#)
- [Immunoprecipitation](#)
- [Flow Cytometry](#)
- [Cell Culture](#)

Anti-PLC gamma 1 Antibody - Images



Western blot analysis of PLC gamma 1 expression in DLD (A), U2OS (B), rat testis (C) whole cell lysates.



Immunohistochemical analysis of PLC gamma 1 staining in human breast cancer formalin fixed paraffin embedded tissue section. The section was pre-treated using heat mediated antigen retrieval with sodium citrate buffer (pH 6.0). The section was then incubated with the antibody at room temperature and detected using an HRP conjugated compact polymer system. DAB was used as the chromogen. The section was then counterstained with haematoxylin and mounted with DPX.

Anti-PLC gamma 1 Antibody - Background

KLH-conjugated synthetic peptide encompassing a sequence within the center region of human PLC gamma 1. The exact sequence is proprietary.