

**Anti-PKA C alpha/beta/gamma Antibody**  
**Rabbit polyclonal antibody to PKA C alpha/beta/gamma**  
**Catalog # AP59668**

## Specification

---

### Anti-PKA C alpha/beta/gamma Antibody - Product Information

Application	WB, IF/IC, IHC
Primary Accession	<a href="#">P17612</a> , <a href="#">P22694</a> , <a href="#">P22612</a>
Other Accession	<a href="#">P05132</a> , <a href="#">P68181</a>
Reactivity	Human, Mouse, Rat, Pig, Bovine, SARS, Dog
Host	Rabbit
Clonality	Polyclonal

### Anti-PKA C alpha/beta/gamma Antibody - Additional Information

#### Other Names

PRKACA; PKACA; cAMP-dependent protein kinase catalytic subunit alpha; PKA C-alpha; PRKACB; cAMP-dependent protein kinase catalytic subunit beta; PKA C-beta; PRKACG; cAMP-dependent protein kinase catalytic subunit gamma; PKA C-gamma

#### Target/Specificity

Recognizes endogenous levels of PKA C alpha/beta/gamma protein.

#### Dilution

WB~~WB (1/500 - 1/1000), IH (1/100 - 1/200), IF/IC (1/100 - 1/500)

IF/IC~~N/A

IHC~~1:100~500

#### Format

Liquid in 0.42% Potassium phosphate, 0.87% Sodium chloride, pH 7.3, 30% glycerol, and 0.09% (W/V) sodium azide.

#### Storage

Store at -20 °C. Stable for 12 months from date of receipt

### Anti-PKA C alpha/beta/gamma Antibody - Protein Information

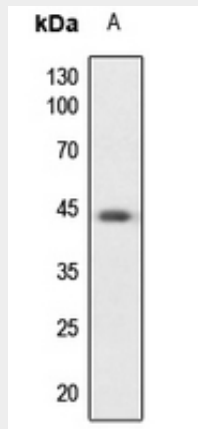
### Anti-PKA C alpha/beta/gamma Antibody - Protocols

Provided below are standard protocols that you may find useful for product applications.

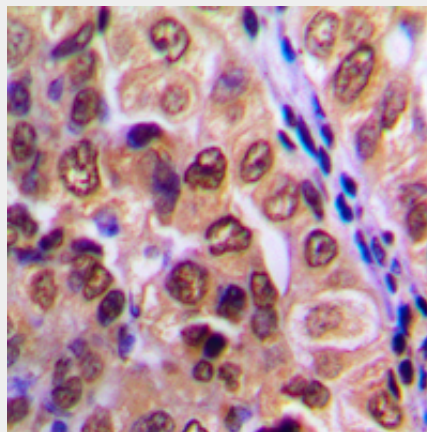
- [Western Blot](#)
- [Blocking Peptides](#)
- [Dot Blot](#)
- [Immunohistochemistry](#)

- [Immunofluorescence](#)
- [Immunoprecipitation](#)
- [Flow Cytometry](#)
- [Cell Culture](#)

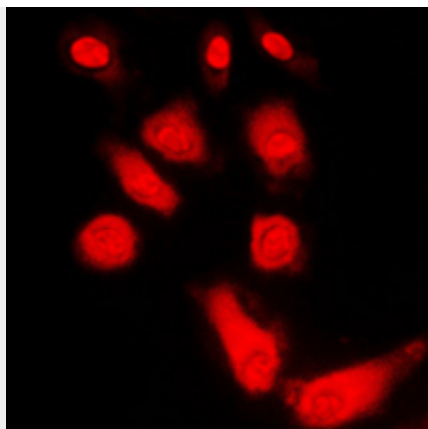
#### Anti-PKA C alpha/beta/gamma Antibody - Images



Western blot analysis of PKA C alpha/beta/gamma expression in mouse spleen (A) whole cell lysates.



Immunohistochemical analysis of PKA C alpha/beta/gamma staining in human breast cancer formalin fixed paraffin embedded tissue section. The section was pre-treated using heat mediated antigen retrieval with sodium citrate buffer (pH 6.0). The section was then incubated with the antibody at room temperature and detected using an HRP conjugated compact polymer system. DAB was used as the chromogen. The section was then counterstained with haematoxylin and mounted with DPX.



Immunofluorescent analysis of PKA C alpha/beta/gamma staining in HEK293T cells. Formalin-fixed cells were permeabilized with 0.1% Triton X-100 in TBS for 5-10 minutes and blocked with 3% BSA-PBS for 30 minutes at room temperature. Cells were probed with the primary antibody in 3% BSA-PBS and incubated overnight at 4 °C in a humidified chamber. Cells were washed with PBST and incubated with a DyLight 594-conjugated secondary antibody (red) in PBS at room temperature in the dark.

#### **Anti-PKA C alpha/beta/gamma Antibody - Background**

KLH-conjugated synthetic peptide encompassing a sequence within the center region of human PKA C alpha/beta/gamma. The exact sequence is proprietary.