

KIAA1688 Antibody (C-term)
Affinity Purified Rabbit Polyclonal Antibody (Pab)
Catalog # AP5966b**Specification**

KIAA1688 Antibody (C-term) - Product Information

Application	IF, WB, FC,E
Primary Accession	O9C0H5
Other Accession	P59281 , NP_079527.1
Reactivity	Human, Mouse
Host	Rabbit
Clonality	Polyclonal
Isotype	Rabbit IgG
Antigen Region	852-880

KIAA1688 Antibody (C-term) - Additional Information**Gene ID** 80728**Other Names**

Rho GTPase-activating protein 39, ARHGAP39, KIAA1688

Target/Specificity

This KIAA1688 antibody is generated from rabbits immunized with a KLH conjugated synthetic peptide between 852-880 amino acids from the C-terminal region of human KIAA1688.

Dilution

IF~~1:25

WB~~1:2000

FC~~1:25

Format

Purified polyclonal antibody supplied in PBS with 0.09% (W/V) sodium azide. This antibody is purified through a protein A column, followed by peptide affinity purification.

Storage

Maintain refrigerated at 2-8°C for up to 2 weeks. For long term storage store at -20°C in small aliquots to prevent freeze-thaw cycles.

Precautions

KIAA1688 Antibody (C-term) is for research use only and not for use in diagnostic or therapeutic procedures.

KIAA1688 Antibody (C-term) - Protein Information**Name** ARHGAP39**Synonyms** KIAA1688

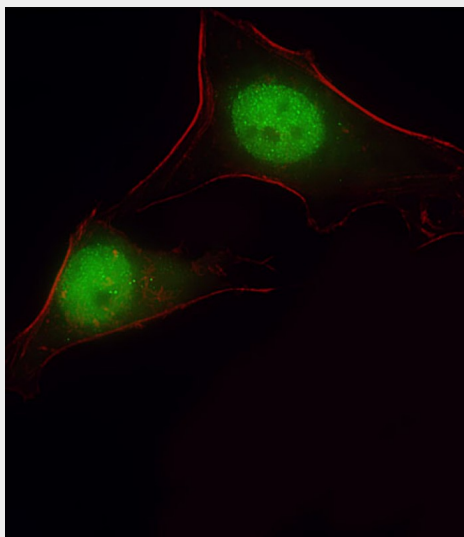
Cellular Location

Nucleus.

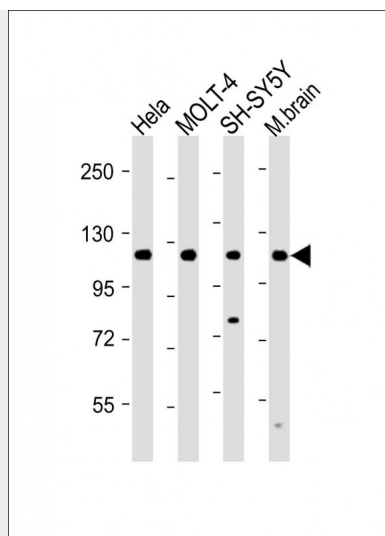
KIAA1688 Antibody (C-term) - Protocols

Provided below are standard protocols that you may find useful for product applications.

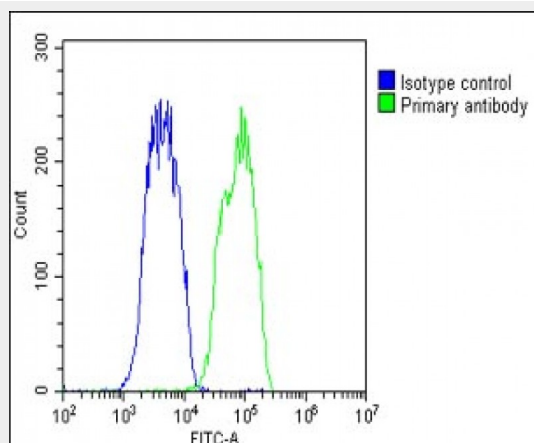
- [Western Blot](#)
- [Blocking Peptides](#)
- [Dot Blot](#)
- [Immunohistochemistry](#)
- [Immunofluorescence](#)
- [Immunoprecipitation](#)
- [Flow Cytometry](#)
- [Cell Culture](#)

KIAA1688 Antibody (C-term) - Images

Immunofluorescent analysis of 4% paraformaldehyde-fixed, 0.1% Triton X-100 permeabilized HeLa cells labeling ARHGAP39 with AP5966b at 1/25 dilution, followed by Dylight® 488-conjugated goat anti-Rabbit IgG secondary antibody at 1/200 dilution (green). Immunofluorescence image showing Nucleus and Weak Cytoplasm staining on HeLa cell line. Cytoplasmic actin is detected with Dylight® 554 Phalloidin (red). The nuclear counter stain is DAPI (blue).



All lanes : Anti-KIAA1688 Antibody (C-term) at 1:2000 dilution Lane 1: HeLa whole cell lysate Lane 2: MOLT-4 whole cell lysate Lane 3: SH-SY5Y whole cell lysate Lane 4: Mouse brain lysate Lysates/proteins at 20 µg per lane. Secondary Goat Anti-Rabbit IgG, (H+L), Peroxidase conjugated at 1/10000 dilution. Predicted band size : 121 kDa Blocking/Dilution buffer: 5% NFDM/TBST.



Overlay histogram showing HeLa cells stained with AP5966b(green line). The cells were fixed with 2% paraformaldehyde (10 min) and then permeabilized with 90% methanol for 10 min. The cells were then incubated in 2% bovine serum albumin to block non-specific protein-protein interactions followed by the antibody (AP5966b, 1:25 dilution) for 60 min at 37°C. The secondary antibody used was Goat-Anti-Rabbit IgG, DyLight® 488 Conjugated Highly Cross-Adsorbed(1583138) at 1/200 dilution for 40 min at 37°C. Isotype control antibody (blue line) was rabbit IgG1 (1µg/1x10⁶ cells) used under the same conditions. Acquisition of >10, 000 events was performed.