

Anti-PRKX Antibody
Rabbit polyclonal antibody to PRKX
Catalog # AP59676**Specification**

Anti-PRKX Antibody - Product Information

Application	WB
Primary Accession	P51817
Other Accession	Q922R0
Reactivity	Human, Mouse, Rat
Host	Rabbit
Clonality	Polyclonal
Calculated MW	40896

Anti-PRKX Antibody - Additional Information**Gene ID** 5613**Other Names**

PKX1; cAMP-dependent protein kinase catalytic subunit PRKX; PrKX; Protein kinase X; Protein kinase X-linked; Serine/threonine-protein kinase PRKX; Protein kinase PKX1

Target/Specificity

Recognizes endogenous levels of PRKX protein.

Dilution

WB~~WB (1/500 - 1/1000)

Format

Liquid in 0.42% Potassium phosphate, 0.87% Sodium chloride, pH 7.3, 30% glycerol, and 0.09% (W/V) sodium azide.

Storage

Store at -20 °C. Stable for 12 months from date of receipt

Anti-PRKX Antibody - Protein Information**Name** PRKX**Synonyms** PKX1**Function**

Serine/threonine protein kinase regulated by and mediating cAMP signaling in cells. Acts through phosphorylation of downstream targets that may include CREB, SMAD6 and PKD1 and has multiple functions in cellular differentiation and epithelial morphogenesis. Regulates myeloid cell differentiation through SMAD6 phosphorylation. Involved in nephrogenesis by stimulating renal epithelial cell migration and tubulogenesis. Also involved in angiogenesis through stimulation of endothelial cell proliferation, migration and vascular- like structure formation.

Cellular Location

Cytoplasm. Nucleus. Note=cAMP induces nuclear translocation

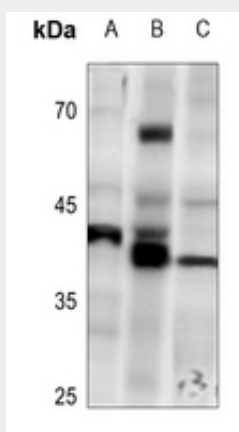
Tissue Location

Widely expressed (at protein level). Specifically expressed in blood by macrophages and granulocytes according to PubMed:9860982.

Anti-PRKX Antibody - Protocols

Provided below are standard protocols that you may find useful for product applications.

- [Western Blot](#)
- [Blocking Peptides](#)
- [Dot Blot](#)
- [Immunohistochemistry](#)
- [Immunofluorescence](#)
- [Immunoprecipitation](#)
- [Flow Cytometry](#)
- [Cell Culture](#)

Anti-PRKX Antibody - Images

Western blot analysis of PRKX expression in SP20 (A), EC9706 (B), HEK293T (C) whole cell lysates.

Anti-PRKX Antibody - Background

KLH-conjugated synthetic peptide encompassing a sequence within the center region of human PRKX. The exact sequence is proprietary.