

**Anti-Peripherin Antibody**  
**Rabbit polyclonal antibody to Peripherin**  
**Catalog # AP59677****Specification**

---

**Anti-Peripherin Antibody - Product Information**

Application	WB
Primary Accession	<a href="#">P41219</a>
Reactivity	Human, Rat, Monkey
Host	Rabbit
Clonality	Polyclonal
Calculated MW	53651

**Anti-Peripherin Antibody - Additional Information****Gene ID** 5630**Other Names**

NEF4; PRPH1; Peripherin; Neurofilament 4

**Target/Specificity**

Recognizes endogenous levels of Peripherin protein.

**Dilution**

WB~~WB (1/500 - 1/1000)

**Format**

Liquid in 0.42% Potassium phosphate, 0.87% Sodium chloride, pH 7.3, 30% glycerol, and 0.09% (W/V) sodium azide.

**Storage**

Store at -20 °C. Stable for 12 months from date of receipt

**Anti-Peripherin Antibody - Protein Information****Name** PRPH**Synonyms** NEF4, PRPH1**Function**

Class-III neuronal intermediate filament protein (By similarity). May form an independent structural network without the involvement of other neurofilaments or may cooperate with the neuronal intermediate filament proteins NEFL, NEFH, NEFM and INA to form a filamentous network (PubMed: [15446584](http://www.uniprot.org/citations/15446584), PubMed: [15322088](http://www.uniprot.org/citations/15322088)). Assembly of the neuronal intermediate filaments may be regulated by RAB7A (By similarity). Plays a role in the development of unmyelinated sensory neurons (By similarity). May be involved in axon elongation and axon regeneration after injury (By similarity). Inhibits neurite extension in

type II spiral ganglion neurons in the cochlea (By similarity).

**Cellular Location**

Cytoplasm, cytoskeleton. Cell projection, axon {ECO:0000250|UniProtKB:P15331}. Perikaryon {ECO:0000250|UniProtKB:P15331}

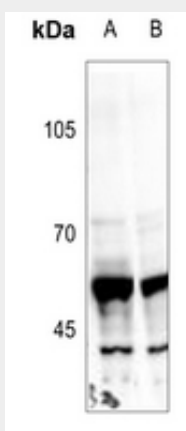
**Tissue Location**

Expressed in the neurons of the outer hair cells in the organ of Corti and to a lesser extent in type I spiral ganglion cells.

**Anti-Peripherin Antibody - Protocols**

Provided below are standard protocols that you may find useful for product applications.

- [Western Blot](#)
- [Blocking Peptides](#)
- [Dot Blot](#)
- [Immunohistochemistry](#)
- [Immunofluorescence](#)
- [Immunoprecipitation](#)
- [Flow Cytometry](#)
- [Cell Culture](#)

**Anti-Peripherin Antibody - Images**

Western blot analysis of Peripherin expression in Hela (A), PC12 (B) whole cell lysates.

**Anti-Peripherin Antibody - Background**

KLH-conjugated synthetic peptide encompassing a sequence within the C-term region of human Peripherin. The exact sequence is proprietary.