

Anti-PSMC6 Antibody
Rabbit polyclonal antibody to PSMC6
Catalog # AP59680**Specification**

Anti-PSMC6 Antibody - Product Information

Application	WB, IP
Primary Accession	P62333
Other Accession	P62334
Reactivity	Human, Mouse, Rat, Zebrafish, Bovine
Host	Rabbit
Clonality	Polyclonal
Calculated MW	44173

Anti-PSMC6 Antibody - Additional Information**Gene ID** 5706**Other Names**SUG2; 26S protease regulatory subunit 10B; 26S proteasome AAA-ATPase subunit RPT4;
Proteasome 26S subunit ATPase 6; Proteasome subunit p42**Target/Specificity**

Recognizes endogenous levels of PSMC6 protein.

Dilution

WB~~WB (1/500 - 1/1000), IP (1/10 - 1/100)

IP~~N/A

Format

Liquid in 0.42% Potassium phosphate, 0.87% Sodium chloride, pH 7.3, 30% glycerol, and 0.09% (W/V) sodium azide.

Storage

Store at -20 °C. Stable for 12 months from date of receipt

Anti-PSMC6 Antibody - Protein Information**Name** PSMC6**Synonyms** SUG2**Function**

Component of the 26S proteasome, a multiprotein complex involved in the ATP-dependent degradation of ubiquitinated proteins. This complex plays a key role in the maintenance of protein homeostasis by removing misfolded or damaged proteins, which could impair cellular functions, and by removing proteins whose functions are no longer required. Therefore, the proteasome participates in numerous cellular processes, including cell cycle progression, apoptosis, or DNA

damage repair. PSMC6 belongs to the heterohexameric ring of AAA (ATPases associated with diverse cellular activities) proteins that unfolds ubiquitinated target proteins that are concurrently translocated into a proteolytic chamber and degraded into peptides.

Cellular Location

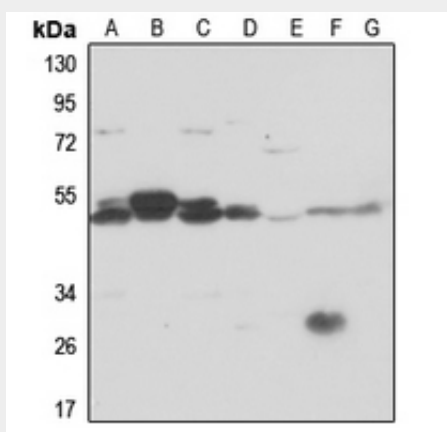
Cytoplasm. Nucleus.

Anti-PSMC6 Antibody - Protocols

Provided below are standard protocols that you may find useful for product applications.

- [Western Blot](#)
- [Blocking Peptides](#)
- [Dot Blot](#)
- [Immunohistochemistry](#)
- [Immunofluorescence](#)
- [Immunoprecipitation](#)
- [Flow Cytometry](#)
- [Cell Culture](#)

Anti-PSMC6 Antibody - Images



Western blot analysis of PSMC6 expression in HEK293T (A), Hela (B), HGC27 (C), mouse testis (D), mouse lung (E), rat testis (F), rat lung (G) whole cell lysates.

Anti-PSMC6 Antibody - Background

KLH-conjugated synthetic peptide encompassing a sequence within the center region of human PSMC6. The exact sequence is proprietary.