

Anti-EP4 Antibody
Rabbit polyclonal antibody to EP4
Catalog # AP59681

Specification

Anti-EP4 Antibody - Product Information

Application	WB
Primary Accession	P35408
Reactivity	Human, Mouse, Monkey
Host	Rabbit
Clonality	Polyclonal
Calculated MW	53119

Anti-EP4 Antibody - Additional Information

Gene ID 5734

Other Names

PTGER2; Prostaglandin E2 receptor EP4 subtype; PGE receptor EP4 subtype; PGE2 receptor EP4 subtype; Prostanoid EP4 receptor

Target/Specificity

KLH-conjugated synthetic peptide encompassing a sequence within the center region of human EP4. The exact sequence is proprietary.

Dilution

WB~~WB (1/500 - 1/1000)

Format

Liquid in 0.42% Potassium phosphate, 0.87% Sodium chloride, pH 7.3, 30% glycerol, and 0.09% (W/V) sodium azide.

Storage

Store at -20 °C. Stable for 12 months from date of receipt

Anti-EP4 Antibody - Protein Information

Name PTGER4

Synonyms PTGER2

Function

Receptor for prostaglandin E2 (PGE2). The activity of this receptor is mediated by G(s) proteins that stimulate adenylate cyclase. Has a relaxing effect on smooth muscle. May play an important role in regulating renal hemodynamics, intestinal epithelial transport, adrenal aldosterone secretion, and uterine function.

Cellular Location

Cell membrane; Multi-pass membrane protein.

Tissue Location

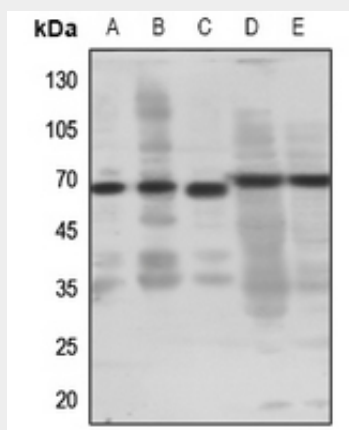
High in intestine and in peripheral blood mononuclear cells; low in lung, kidney, thymus, uterus, vasculature and brain. Not found in liver, heart, retina or skeletal muscle

Anti-EP4 Antibody - Protocols

Provided below are standard protocols that you may find useful for product applications.

- [Western Blot](#)
- [Blocking Peptides](#)
- [Dot Blot](#)
- [Immunohistochemistry](#)
- [Immunofluorescence](#)
- [Immunoprecipitation](#)
- [Flow Cytometry](#)
- [Cell Culture](#)

Anti-EP4 Antibody - Images



Western blot analysis of EP4 expression in HEK293T (A), HeLa (B), H1688 (C), mouse lung (D), mouse kidney (E) whole cell lysates.

Anti-EP4 Antibody - Background

KLH-conjugated synthetic peptide encompassing a sequence within the center region of human EP4. The exact sequence is proprietary.