

Anti-RAP1GAP Antibody
Rabbit polyclonal antibody to RAP1GAP
Catalog # AP59685**Specification**

Anti-RAP1GAP Antibody - Product Information

Application	WB, IHC
Primary Accession	P47736
Other Accession	A2ALS5
Reactivity	Human, Mouse, Rat, Bovine
Host	Rabbit
Clonality	Polyclonal
Calculated MW	73361

Anti-RAP1GAP Antibody - Additional Information**Gene ID** 5909**Other Names**

KIAA0474; RAP1GA1; Rap1 GTPase-activating protein 1; Rap1GAP; Rap1GAP1

Target/Specificity

Recognizes endogenous levels of RAP1GAP protein.

Dilution

WB~~WB (1/500 - 1/1000), IH (1/100 - 1/200)

IHC~~1:100~500

Format

Liquid in 0.42% Potassium phosphate, 0.87% Sodium chloride, pH 7.3, 30% glycerol, and 0.09% (W/V) sodium azide.

Storage

Store at -20 °C. Stable for 12 months from date of receipt

Anti-RAP1GAP Antibody - Protein Information**Name** RAP1GAP**Synonyms** KIAA0474, RAP1GA1**Function**

GTPase activator for the nuclear Ras-related regulatory protein RAP-1A (KREV-1), converting it to the putatively inactive GDP- bound state.

Cellular Location

Golgi apparatus membrane; Peripheral membrane protein

Tissue Location

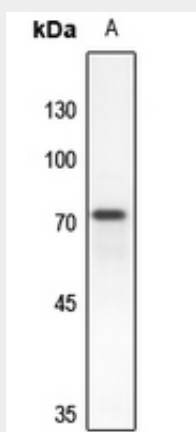
Significant expression seen in the brain, kidney and pancreas. Abundant in the cerebral cortex and expressed at much lower levels in the spinal cord. Not detected in the lymphoid tissues

Anti-RAP1GAP Antibody - Protocols

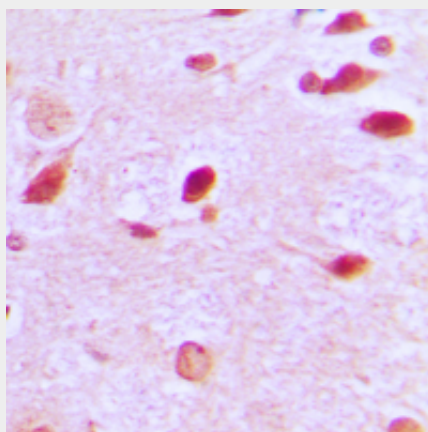
Provided below are standard protocols that you may find useful for product applications.

- [Western Blot](#)
- [Blocking Peptides](#)
- [Dot Blot](#)
- [Immunohistochemistry](#)
- [Immunofluorescence](#)
- [Immunoprecipitation](#)
- [Flow Cytometry](#)
- [Cell Culture](#)

Anti-RAP1GAP Antibody - Images



Western blot analysis of RAP1GAP expression in mouse kidney (A) whole cell lysates.



Immunohistochemical analysis of RAP1GAP staining in human brain formalin fixed paraffin embedded tissue section. The section was pre-treated using heat mediated antigen retrieval with sodium citrate buffer (pH 6.0). The section was then incubated with the antibody at room temperature and detected using an HRP conjugated compact polymer system. DAB was used as the chromogen. The section was then counterstained with haematoxylin and mounted with DPX.

Anti-RAP1GAP Antibody - Background

KLH-conjugated synthetic peptide encompassing a sequence within the C-term region of human RAP1GAP. The exact sequence is proprietary.