

Anti-RGS1 Antibody
Rabbit polyclonal antibody to RGS1
Catalog # AP59690**Specification**

Anti-RGS1 Antibody - Product Information

Application	WB, IHC
Primary Accession	Q08116
Other Accession	Q9JL25
Reactivity	Human, Mouse, Rat
Host	Rabbit
Clonality	Polyclonal
Calculated MW	23858

Anti-RGS1 Antibody - Additional Information**Gene ID** 5996**Other Names**

1R20; BL34; IER1; Regulator of G-protein signaling 1; RGS1; B-cell activation protein BL34; Early response protein 1R20

Target/Specificity

Recognizes endogenous levels of RGS1 protein.

Dilution

WB~~WB (1/500 - 1/1000), IH (1/100 - 1/200)

IHC~~1:100~500

Format

Liquid in 0.42% Potassium phosphate, 0.87% Sodium chloride, pH 7.3, 30% glycerol, and 0.09% (W/V) sodium azide.

Storage

Store at -20 °C.Stable for 12 months from date of receipt

Anti-RGS1 Antibody - Protein Information**Name** RGS1**Synonyms** 1R20, BL34, IER1**Function**

Regulates G protein-coupled receptor signaling cascades, including signaling downstream of the N-formylpeptide chemoattractant receptors and leukotriene receptors (PubMed:10480894). Inhibits B cell chemotaxis toward CXCL12 (By similarity). Inhibits signal transduction by increasing the GTPase activity of G protein alpha subunits thereby driving them into their inactive GDP-bound form

(PubMed:10480894,
PubMed:18434541).

Cellular Location

Cell membrane; Peripheral membrane protein; Cytoplasmic side. Cytoplasm, cytosol

Tissue Location

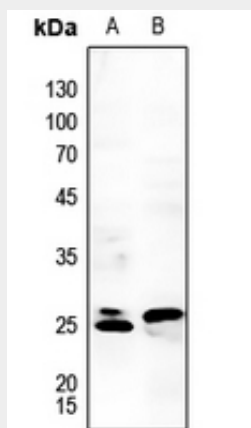
Detected in peripheral blood monocytes (PubMed:10480894). Expression is relatively low in B-cells and chronic lymphocytic leukemia B-cells; however, in other types of malignant B- cell such as non-Hodgkin lymphoma and hairy cell leukemia, expression is constitutively high (PubMed:8473738).

Anti-RGS1 Antibody - Protocols

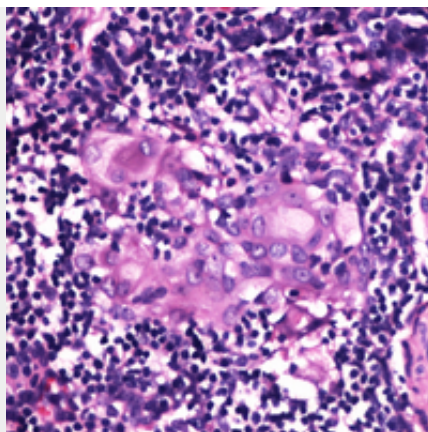
Provided below are standard protocols that you may find useful for product applications.

- [Western Blot](#)
- [Blocking Peptides](#)
- [Dot Blot](#)
- [Immunohistochemistry](#)
- [Immunofluorescence](#)
- [Immunoprecipitation](#)
- [Flow Cytometry](#)
- [Cell Culture](#)

Anti-RGS1 Antibody - Images



Western blot analysis of RGS1 expression in mouse kidney (A), mouse spleen (B) whole cell lysates.



Immunohistochemical analysis of RGS1 staining in human thymus formalin fixed paraffin embedded tissue section. The section was pre-treated using heat mediated antigen retrieval with sodium citrate buffer (pH 6.0). The section was then incubated with the antibody at room temperature and detected using an HRP conjugated compact polymer system. DAB was used as the chromogen. The section was then counterstained with haematoxylin and mounted with DPX.

Anti-RGS1 Antibody - Background

KLH-conjugated synthetic peptide encompassing a sequence within the center region of human RGS1. The exact sequence is proprietary.