

Anti-RGS10 Antibody
Rabbit polyclonal antibody to RGS10
Catalog # AP59691**Specification**

Anti-RGS10 Antibody - Product Information

Application	WB, IH
Primary Accession	O43665
Other Accession	O9CQE5
Reactivity	Human, Mouse, Rat, Bovine
Host	Rabbit
Clonality	Polyclonal
Calculated MW	21210

Anti-RGS10 Antibody - Additional Information**Gene ID** 6001**Other Names**

Regulator of G-protein signaling 10; RGS10

Target/Specificity

Recognizes endogenous levels of RGS10 protein.

Dilution

WB~~WB (1/500 - 1/1000), IH (1/100 - 1/200)

IH~~WB (1/500 - 1/1000), IH (1/100 - 1/200)

Format

Liquid in 0.42% Potassium phosphate, 0.87% Sodium chloride, pH 7.3, 30% glycerol, and 0.09% (W/V) sodium azide.

Storage

Store at -20 °C. Stable for 12 months from date of receipt

Anti-RGS10 Antibody - Protein Information**Name** RGS10**Function**

Regulates G protein-coupled receptor signaling cascades, including signaling downstream of the muscarinic acetylcholine receptor CHRM2. Inhibits signal transduction by increasing the GTPase activity of G protein alpha subunits, thereby driving them into their inactive GDP-bound form (PubMed: [8774883](http://www.uniprot.org/citations/8774883)), (PubMed: [10608901](http://www.uniprot.org/citations/10608901)), (PubMed: [9353196](http://www.uniprot.org/citations/9353196)), (PubMed: [11443111](http://www.uniprot.org/citations/11443111)), (PubMed: [18434541](http://www.uniprot.org/citations/18434541)).

Modulates the activity of potassium channels that are activated in response to CHRM2 signaling (PubMed:11443111). Activity on GNAZ is inhibited by palmitoylation of the G-protein (PubMed:9353196).

Cellular Location

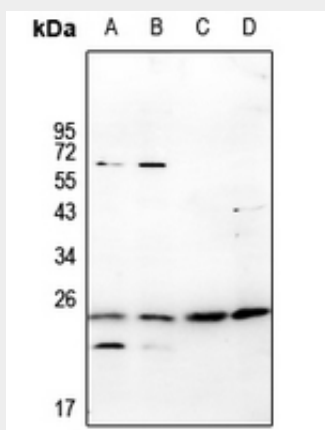
[Isoform 1]: Cytoplasm, cytosol. Nucleus Note=Forskolin treatment promotes phosphorylation and translocation to the nucleus.

Anti-RGS10 Antibody - Protocols

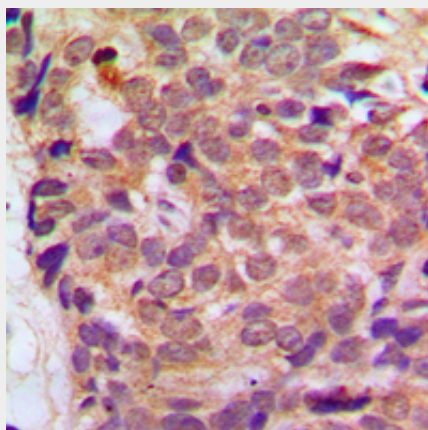
Provided below are standard protocols that you may find useful for product applications.

- [Western Blot](#)
- [Blocking Peptides](#)
- [Dot Blot](#)
- [Immunohistochemistry](#)
- [Immunofluorescence](#)
- [Immunoprecipitation](#)
- [Flow Cytometry](#)
- [Cell Culture](#)

Anti-RGS10 Antibody - Images



Western blot analysis of RGS10 expression in Jurkat (A), Myla2059 (B), Raw264.7 (C), PC12 (D) whole cell lysates.



Immunohistochemical analysis of RGS10 staining in human breast cancer formalin fixed paraffin embedded tissue section. The section was pre-treated using heat mediated antigen retrieval with sodium citrate buffer (pH 6.0). The section was then incubated with the antibody at room temperature and detected using an HRP conjugated compact polymer system. DAB was used as the chromogen. The section was then counterstained with haematoxylin and mounted with DPX.

Anti-RGS10 Antibody - Background

KLH-conjugated synthetic peptide encompassing a sequence within the center region of human RGS10. The exact sequence is proprietary.