

**Anti-SGK1/2 Antibody**  
**Rabbit polyclonal antibody to SGK1/2**  
**Catalog # AP59698****Specification**

---

**Anti-SGK1/2 Antibody - Product Information**

Application	WB, IH, IF
Primary Accession	<a href="#">O00141</a> , <a href="#">Q9HBY8</a>
Other Accession	<a href="#">Q9WVC6</a> , <a href="#">Q9QZS5</a>
Reactivity	Human, Mouse, Rat, Rabbit, Zebrafish, Chicken, Bovine
Host	Rabbit
Clonality	Polyclonal

**Anti-SGK1/2 Antibody - Additional Information****Other Names**

SGK1; SGK; Serine/threonine-protein kinase Sgk1; Serum/glucocorticoid-regulated kinase 1; SGK2; Serine/threonine-protein kinase Sgk2; Serum/glucocorticoid-regulated kinase 2

**Target/Specificity**

Recognizes endogenous levels of SGK1/2 protein.

**Dilution**

WB~~WB (1/500 - 1/1000), IH (1/100 - 1/200), IF/IC (1/100 - 1/500)  
IH~~WB (1/500 - 1/1000), IH (1/100 - 1/200), IF/IC (1/100 - 1/500)  
IF~~WB (1/500 - 1/1000), IH (1/100 - 1/200), IF/IC (1/100 - 1/500)

**Format**

Liquid in 0.42% Potassium phosphate, 0.87% Sodium chloride, pH 7.3, 30% glycerol, and 0.09% (W/V) sodium azide.

**Storage**

Store at -20 °C. Stable for 12 months from date of receipt

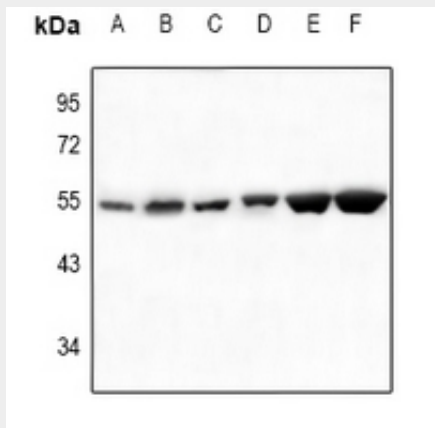
**Anti-SGK1/2 Antibody - Protein Information****Anti-SGK1/2 Antibody - Protocols**

Provided below are standard protocols that you may find useful for product applications.

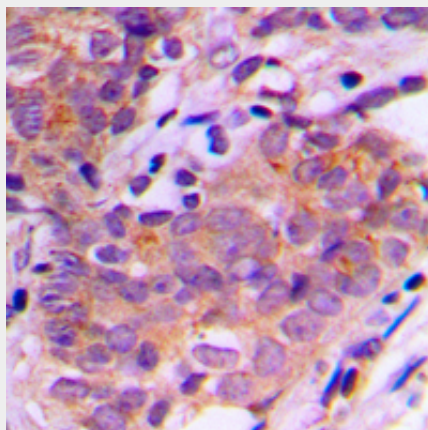
- [Western Blot](#)
- [Blocking Peptides](#)
- [Dot Blot](#)
- [Immunohistochemistry](#)
- [Immunofluorescence](#)

- [Immunoprecipitation](#)
- [Flow Cytometry](#)
- [Cell Culture](#)

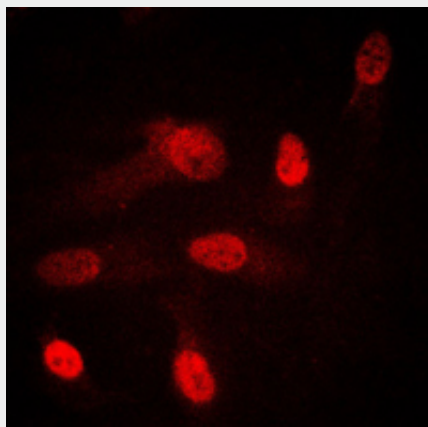
## Anti-SGK1/2 Antibody - Images



Western blot analysis of SGK1/2 expression in mouse brain (A), rat brain (B), mouse embryo (C), HCC827 (D), HEK293T (E), Panc1 (F) whole cell lysates.



Immunohistochemical analysis of SGK1/2 staining in human breast cancer formalin fixed paraffin embedded tissue section. The section was pre-treated using heat mediated antigen retrieval with sodium citrate buffer (pH 6.0). The section was then incubated with the antibody at room temperature and detected using an HRP conjugated compact polymer system. DAB was used as the chromogen. The section was then counterstained with haematoxylin and mounted with DPX.



Immunofluorescent analysis of SGK1/2 staining in HeLa cells. Formalin-fixed cells were permeabilized with 0.1% Triton X-100 in TBS for 5-10 minutes and blocked with 3% BSA-PBS for 30 minutes at room temperature. Cells were probed with the primary antibody in 3% BSA-PBS and incubated overnight at 4 °C in a humidified chamber. Cells were washed with PBST and incubated with a DyLight 594-conjugated secondary antibody (red) in PBS at room temperature in the dark.

**Anti-SGK1/2 Antibody - Background**

KLH-conjugated synthetic peptide encompassing a sequence within the center region of human SGK1/2. The exact sequence is proprietary.