

**Anti-Beta-synuclein Antibody**  
**Rabbit polyclonal antibody to Beta-synuclein**  
**Catalog # AP59704****Specification**

---

**Anti-Beta-synuclein Antibody - Product Information**

Application	WB, IF/IC
Primary Accession	<a href="#">O16143</a>
Other Accession	<a href="#">O91ZZ3</a>
Reactivity	Human, Mouse, Rat, Monkey
Host	Rabbit
Clonality	Polyclonal
Calculated MW	14288

**Anti-Beta-synuclein Antibody - Additional Information****Gene ID** 6620**Other Names**

Beta-synuclein

**Target/Specificity**

KLH-conjugated synthetic peptide encompassing a sequence within the C-term region of human Beta-synuclein. The exact sequence is proprietary.

**Dilution**

WB~~WB (1/500 - 1/1000), IF/IC (1/100 - 1/500)

IF/IC~~N/A

**Format**

Liquid in 0.42% Potassium phosphate, 0.87% Sodium chloride, pH 7.3, 30% glycerol, and 0.09% (W/V) sodium azide.

**Storage**

Store at -20 °C. Stable for 12 months from date of receipt

**Anti-Beta-synuclein Antibody - Protein Information****Name** SNCB**Function**

Non-amyloid component of senile plaques found in Alzheimer disease. Could act as a regulator of SNCA aggregation process. Protects neurons from staurosporine and 6-hydroxy dopamine (6OHDA)-stimulated caspase activation in a p53/TP53-dependent manner. Contributes to restore the SNCA anti-apoptotic function abolished by 6OHDA. Not found in the Lewy bodies associated with Parkinson disease.

**Cellular Location**

Cytoplasm.

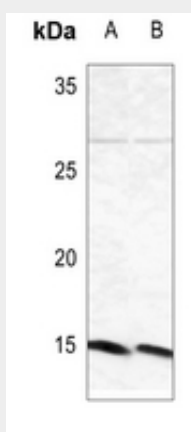
**Tissue Location**

Expressed predominantly in brain; concentrated in presynaptic nerve terminals

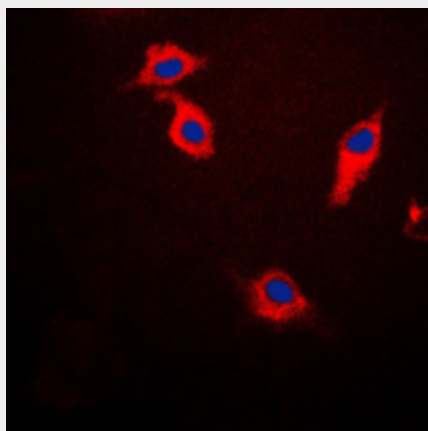
**Anti-Beta-synuclein Antibody - Protocols**

Provided below are standard protocols that you may find useful for product applications.

- [Western Blot](#)
- [Blocking Peptides](#)
- [Dot Blot](#)
- [Immunohistochemistry](#)
- [Immunofluorescence](#)
- [Immunoprecipitation](#)
- [Flow Cytometry](#)
- [Cell Culture](#)

**Anti-Beta-synuclein Antibody - Images**

Western blot analysis of Beta-synuclein expression in mouse testis (A), rat testis (B) whole cell lysates.



Immunofluorescent analysis of Beta-synuclein staining in HeLa cells. Formalin-fixed cells were permeabilized with 0.1% Triton X-100 in TBS for 5-10 minutes and blocked with 3% BSA-PBS for 30 minutes at room temperature. Cells were probed with the primary antibody in 3% BSA-PBS and

incubated overnight at 4 °C in a humidified chamber. Cells were washed with PBST and incubated with a DyLight 594-conjugated secondary antibody (red) in PBS at room temperature in the dark. DAPI was used to stain the cell nuclei (blue).

**Anti-Beta-synuclein Antibody - Background**

KLH-conjugated synthetic peptide encompassing a sequence within the C-term region of human Beta-synuclein. The exact sequence is proprietary.