

Anti-SOD1 Antibody
Rabbit polyclonal antibody to SOD1
Catalog # AP59705

Specification

Anti-SOD1 Antibody - Product Information

Application	WB
Primary Accession	P00441
Other Accession	P08228
Reactivity	Human, Mouse, Rat, Rabbit, Monkey, Bovine, SARS
Host	Rabbit
Clonality	Polyclonal
Calculated MW	15936

Anti-SOD1 Antibody - Additional Information

Gene ID 6647

Other Names

Superoxide dismutase [Cu-Zn]; Superoxide dismutase 1; hSod1

Target/Specificity

KLH-conjugated synthetic peptide encompassing a sequence within the center region of human SOD1. The exact sequence is proprietary.

Dilution

WB~~WB (1/500 - 1/1000)

Format

Liquid in 0.42% Potassium phosphate, 0.87% Sodium chloride, pH 7.3, 30% glycerol, and 0.09% (W/V) sodium azide.

Storage

Store at -20 °C. Stable for 12 months from date of receipt

Anti-SOD1 Antibody - Protein Information

Name SOD1 ([HGNC:11179](#))

Function

Destroys radicals which are normally produced within the cells and which are toxic to biological systems.

Cellular Location

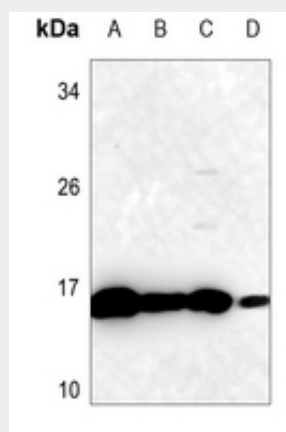
Cytoplasm. Nucleus. Note=Predominantly cytoplasmic; the pathogenic variants ALS1 Arg-86 and Ala-94 gradually aggregates and accumulates in mitochondria.

Anti-SOD1 Antibody - Protocols

Provided below are standard protocols that you may find useful for product applications.

- [Western Blot](#)
- [Blocking Peptides](#)
- [Dot Blot](#)
- [Immunohistochemistry](#)
- [Immunofluorescence](#)
- [Immunoprecipitation](#)
- [Flow Cytometry](#)
- [Cell Culture](#)

Anti-SOD1 Antibody - Images



Western blot analysis of SOD1 expression in mouse liver (A), mouse testis (B), rat liver (C), rat testis (D) whole cell lysates.

Anti-SOD1 Antibody - Background

KLH-conjugated synthetic peptide encompassing a sequence within the center region of human SOD1. The exact sequence is proprietary.