

**Anti-TCF19 Antibody**  
**Rabbit polyclonal antibody to TCF19**  
**Catalog # AP59714****Specification**

---

**Anti-TCF19 Antibody - Product Information**

Application	WB
Primary Accession	<a href="#">O9Y242</a>
Reactivity	Human, Mouse, Rat
Host	Rabbit
Clonality	Polyclonal
Calculated MW	37184

**Anti-TCF19 Antibody - Additional Information****Gene ID** 6941**Other Names**

SC1; Transcription factor 19; TCF-19; Transcription factor SC1

**Target/Specificity**

Recognizes endogenous levels of TCF19 protein.

**Dilution**

WB~~WB (1/500 - 1/1000)

**Format**

Liquid in 0.42% Potassium phosphate, 0.87% Sodium chloride, pH 7.3, 30% glycerol, and 0.09% (W/V) sodium azide.

**Storage**

Store at -20 °C.Stable for 12 months from date of receipt

**Anti-TCF19 Antibody - Protein Information****Name** TCF19**Synonyms** SC1**Function**

Potential trans-activating factor that could play an important role in the transcription of genes required for the later stages of cell cycle progression.

**Cellular Location**

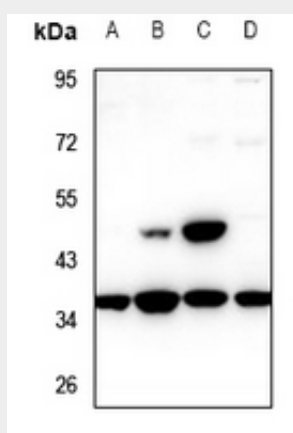
Nucleus.

## Anti-TCF19 Antibody - Protocols

Provided below are standard protocols that you may find useful for product applications.

- [Western Blot](#)
- [Blocking Peptides](#)
- [Dot Blot](#)
- [Immunohistochemistry](#)
- [Immunofluorescence](#)
- [Immunoprecipitation](#)
- [Flow Cytometry](#)
- [Cell Culture](#)

## Anti-TCF19 Antibody - Images



Western blot analysis of TCF19 expression in CT26 (A), C6 (B), MCF7 (C), A549 (D) whole cell lysates.

## Anti-TCF19 Antibody - Background

KLH-conjugated synthetic peptide encompassing a sequence within the center region of human TCF19. The exact sequence is proprietary.