

Anti-TESK1 Antibody
Rabbit polyclonal antibody to TESK1
Catalog # AP59715**Specification**

Anti-TESK1 Antibody - Product Information

Application	WB, IP
Primary Accession	Q15569
Reactivity	Human, Rat, Monkey
Host	Rabbit
Clonality	Polyclonal
Calculated MW	67684

Anti-TESK1 Antibody - Additional Information**Gene ID** 7016**Other Names**

Dual specificity testis-specific protein kinase 1; Testicular protein kinase 1

Target/Specificity

KLH-conjugated synthetic peptide encompassing a sequence within the center region of human TESK1. The exact sequence is proprietary.

Dilution

WB~~WB (1/500 - 1/1000), IP (1/10 - 1/100)

IP~~N/A

Format

Liquid in 0.42% Potassium phosphate, 0.87% Sodium chloride, pH 7.3, 30% glycerol, and 0.09% (W/V) sodium azide.

Storage

Store at -20 °C. Stable for 12 months from date of receipt

Anti-TESK1 Antibody - Protein Information**Name** TESK1**Function**

Dual specificity protein kinase activity catalyzing autophosphorylation and phosphorylation of exogenous substrates on both serine/threonine and tyrosine residues (By similarity). Regulates the cellular cytoskeleton by enhancing actin stress fiber formation via phosphorylation of cofilin and by preventing microtubule breakdown via inhibition of TAOK1/MARKK kinase activity (By similarity). Inhibits podocyte motility via regulation of actin cytoskeletal dynamics and phosphorylation of CFL1 (By similarity). Positively regulates integrin- mediated cell spreading, via phosphorylation of cofilin (PubMed:15584898). Suppresses ciliogenesis via multiple pathways; phosphorylation

of CFL1, suppression of ciliary vesicle directional trafficking to the ciliary base, and by facilitating YAP1 nuclear localization where it acts as a transcriptional corepressor of the TEAD4 target genes AURKA and PLK1 (PubMed:25849865). Probably plays a central role at and after the meiotic phase of spermatogenesis (By similarity).

Cellular Location

Cytoplasm. Cytoplasm, perinuclear region {ECO:0000250|UniProtKB:Q63572} Cytoplasm, cytoskeleton, microtubule organizing center, centrosome. Cell projection, lamellipodium {ECO:0000250|UniProtKB:Q63572}. Note=Colocalizes with SPRY4 in vesicular spots in the cytoplasm (PubMed:15584898). Localized to F- actin-rich lamellipodia at the cell periphery following fibronectin- mediated cell adhesion of Schwann cells (By similarity) {ECO:0000250|UniProtKB:Q63572, ECO:0000269|PubMed:15584898}

Tissue Location

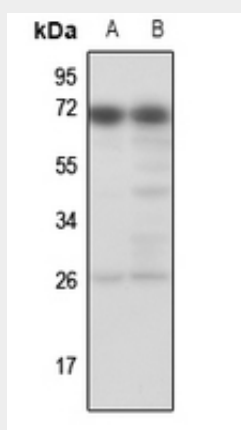
Expressed in podocytes and renal tubular cells in the kidney (at protein level).

Anti-TESK1 Antibody - Protocols

Provided below are standard protocols that you may find useful for product applications.

- [Western Blot](#)
- [Blocking Peptides](#)
- [Dot Blot](#)
- [Immunohistochemistry](#)
- [Immunofluorescence](#)
- [Immunoprecipitation](#)
- [Flow Cytometry](#)
- [Cell Culture](#)

Anti-TESK1 Antibody - Images



Western blot analysis of TSK1 expression in rat liver (A), rat muscle (B) whole cell lysates.

Anti-TESK1 Antibody - Background

KLH-conjugated synthetic peptide encompassing a sequence within the center region of human TSK1. The exact sequence is proprietary.