

**Anti-TIMP2 Antibody**  
**Rabbit polyclonal antibody to TIMP2**  
**Catalog # AP59717****Specification**

---

**Anti-TIMP2 Antibody - Product Information**

Application	WB, IF/IC, IHC
Primary Accession	<a href="#">P16035</a>
Other Accession	<a href="#">P25785</a>
Reactivity	Human, Mouse, Rat, Monkey, Pig
Host	Rabbit
Clonality	Polyclonal
Calculated MW	24399

**Anti-TIMP2 Antibody - Additional Information****Gene ID** 7077**Other Names**

Metalloproteinase inhibitor 2; CSC-21K; Tissue inhibitor of metalloproteinases 2; TIMP-2

**Target/Specificity**

KLH-conjugated synthetic peptide encompassing a sequence within the center region of human TIMP2. The exact sequence is proprietary.

**Dilution**

WB~~WB (1/500 - 1/1000), IH (1/100 - 1/200), IF/IC (1/100 - 1/500)

IF/IC~~N/A

IHC~~1:100~500

**Format**

Liquid in 0.42% Potassium phosphate, 0.87% Sodium chloride, pH 7.3, 30% glycerol, and 0.09% (W/V) sodium azide.

**Storage**

Store at -20 °C.Stable for 12 months from date of receipt

**Anti-TIMP2 Antibody - Protein Information****Name** TIMP2**Function**

Complexes with metalloproteinases (such as collagenases) and irreversibly inactivates them by binding to their catalytic zinc cofactor. Known to act on MMP-1, MMP-2, MMP-3, MMP-7, MMP-8, MMP-9, MMP-10, MMP-13, MMP-14, MMP-15, MMP-16 and MMP-19.

**Cellular Location**

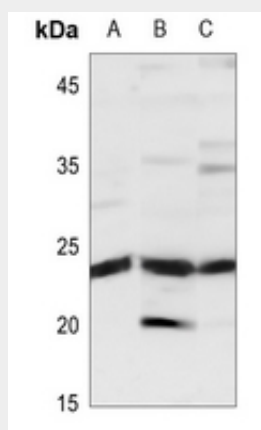
Secreted.

## Anti-TIMP2 Antibody - Protocols

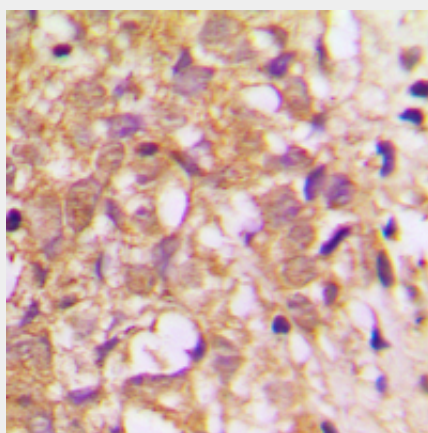
Provided below are standard protocols that you may find useful for product applications.

- [Western Blot](#)
- [Blocking Peptides](#)
- [Dot Blot](#)
- [Immunohistochemistry](#)
- [Immunofluorescence](#)
- [Immunoprecipitation](#)
- [Flow Cytometry](#)
- [Cell Culture](#)

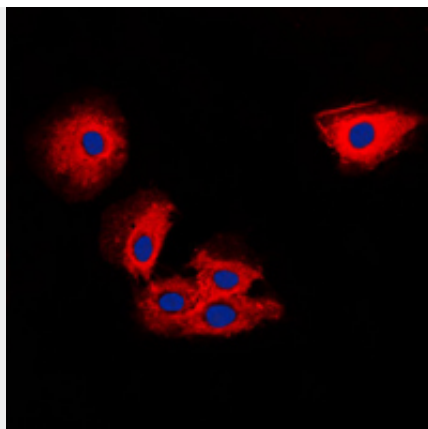
## Anti-TIMP2 Antibody - Images



Western blot analysis of TIMP2 expression in U2OS (A), mouse testis (B), rat testis (C) whole cell lysates.



Immunohistochemical analysis of TIMP2 staining in human breast cancer formalin fixed paraffin embedded tissue section. The section was pre-treated using heat mediated antigen retrieval with sodium citrate buffer (pH 6.0). The section was then incubated with the antibody at room temperature and detected using an HRP conjugated compact polymer system. DAB was used as the chromogen. The section was then counterstained with haematoxylin and mounted with DPX.



Immunofluorescent analysis of TIMP2 staining in MCF7 cells. Formalin-fixed cells were permeabilized with 0.1% Triton X-100 in TBS for 5-10 minutes and blocked with 3% BSA-PBS for 30 minutes at room temperature. Cells were probed with the primary antibody in 3% BSA-PBS and incubated overnight at 4 °C in a humidified chamber. Cells were washed with PBST and incubated with a DyLight 594-conjugated secondary antibody (red) in PBS at room temperature in the dark. DAPI was used to stain the cell nuclei (blue).

#### **Anti-TIMP2 Antibody - Background**

KLH-conjugated synthetic peptide encompassing a sequence within the center region of human TIMP2. The exact sequence is proprietary.