

Anti-NKX2-1 Antibody
Rabbit polyclonal antibody to NKX2-1
Catalog # AP59718**Specification**

Anti-NKX2-1 Antibody - Product Information

Application	WB
Primary Accession	P43699
Other Accession	P50220
Reactivity	Human, Mouse, Rat, Zebrafish, Pig, SARS, Dog
Host	Rabbit
Clonality	Polyclonal
Calculated MW	38596

Anti-NKX2-1 Antibody - Additional Information**Gene ID** 7080**Other Names**

NKX2A; TITF1; TTF1; Homeobox protein Nkx-2.1; Homeobox protein NK-2 homolog A; Thyroid nuclear factor 1; Thyroid transcription factor 1; TTF-1

Target/Specificity

Recognizes endogenous levels of NKX2-1 protein.

Dilution

WB~~WB (1/500 - 1/1000)

Format

Liquid in 0.42% Potassium phosphate, 0.87% Sodium chloride, pH 7.3, 30% glycerol, and 0.09% (W/V) sodium azide.

Storage

Store at -20 °C. Stable for 12 months from date of receipt

Anti-NKX2-1 Antibody - Protein Information**Name** NKX2-1 ([HGNC:11825](#))**Synonyms** NKX2A, TITF1, TTF1**Function**

Transcription factor that binds and activates the promoter of thyroid specific genes such as thyroglobulin, thyroperoxidase, and thyrotropin receptor. Crucial in the maintenance of the thyroid differentiation phenotype. May play a role in lung development and surfactant homeostasis. Forms a regulatory loop with GRHL2 that coordinates lung epithelial cell morphogenesis and differentiation. Activates the transcription of GNRHR and plays a role in enhancing the circadian

oscillation of its gene expression. Represses the transcription of the circadian transcriptional repressor NR1D1 (By similarity).

Cellular Location

Nucleus {ECO:0000250|UniProtKB:P50220}.

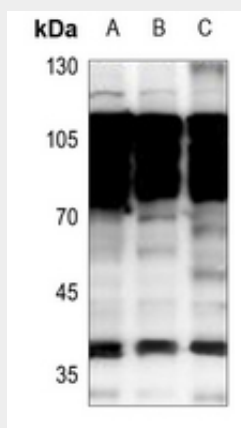
Tissue Location

Thyroid and lung.

Anti-NKX2-1 Antibody - Protocols

Provided below are standard protocols that you may find useful for product applications.

- [Western Blot](#)
- [Blocking Peptides](#)
- [Dot Blot](#)
- [Immunohistochemistry](#)
- [Immunofluorescence](#)
- [Immunoprecipitation](#)
- [Flow Cytometry](#)
- [Cell Culture](#)

Anti-NKX2-1 Antibody - Images

Western blot analysis of NKX2-1 expression in A549 (A), H1792 (B), HCC827 (C) whole cell lysates.

Anti-NKX2-1 Antibody - Background

KLH-conjugated synthetic peptide encompassing a sequence within the N-term region of human NKX2-1. The exact sequence is proprietary.