

Anti-EOMES Antibody
Rabbit polyclonal antibody to EOMES
Catalog # AP59738**Specification**

Anti-EOMES Antibody - Product Information

Application	WB
Primary Accession	O95936
Other Accession	O54839
Reactivity	Human, Mouse, Rat
Host	Rabbit
Clonality	Polyclonal
Calculated MW	72732

Anti-EOMES Antibody - Additional Information**Gene ID** 8320**Other Names**

TBR2; Eomesodermin homolog; T-box brain protein 2; T-brain-2; TBR-2

Target/Specificity

KLH-conjugated synthetic peptide encompassing a sequence within the N-term region of human EOMES. The exact sequence is proprietary.

Dilution

WB~~WB (1/500 - 1/1000)

Format

Liquid in 0.42% Potassium phosphate, 0.87% Sodium chloride, pH 7.3, 30% glycerol, and 0.09% (W/V) sodium azide.

Storage

Store at -20 °C. Stable for 12 months from date of receipt

Anti-EOMES Antibody - Protein Information**Name** EOMES**Synonyms** TBR2**Function**

Functions as a transcriptional activator playing a crucial role during development. Functions in trophoblast differentiation and later in gastrulation, regulating both mesoderm delamination and endoderm specification. Plays a role in brain development being required for the specification and the proliferation of the intermediate progenitor cells and their progeny in the cerebral cortex (PubMed:17353897). Required for differentiation and migration of unipolar dendritic brush cells (PubMed:17353897).

href="http://www.uniprot.org/citations/33488348" target="_blank">33488348). Also involved in the differentiation of CD8+ T-cells during immune response regulating the expression of lytic effector genes (PubMed:17566017).

Cellular Location

Nucleus.

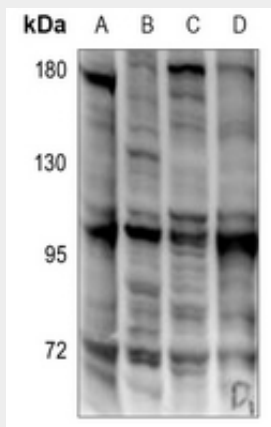
Tissue Location

Expressed in CD8+ T-cells.

Anti-EOMES Antibody - Protocols

Provided below are standard protocols that you may find useful for product applications.

- [Western Blot](#)
- [Blocking Peptides](#)
- [Dot Blot](#)
- [Immunohistochemistry](#)
- [Immunofluorescence](#)
- [Immunoprecipitation](#)
- [Flow Cytometry](#)
- [Cell Culture](#)

Anti-EOMES Antibody - Images

Western blot analysis of EOMES expression in BV2 (A), C6 (B), A549 (C), Jurkat (D) whole cell lysates.

Anti-EOMES Antibody - Background

KLH-conjugated synthetic peptide encompassing a sequence within the N-term region of human EOMES. The exact sequence is proprietary.