

**HTR3C Antibody (Center)**  
**Affinity Purified Rabbit Polyclonal Antibody (Pab)**  
**Catalog # AP5973c****Specification**

---

**HTR3C Antibody (Center) - Product Information**

|                   |                             |
|-------------------|-----------------------------|
| Application       | WB,E                        |
| Primary Accession | <a href="#">Q8WXA8</a>      |
| Other Accession   | <a href="#">NP_570126.2</a> |
| Reactivity        | Human                       |
| Host              | Rabbit                      |
| Clonality         | Polyclonal                  |
| Isotype           | Rabbit IgG                  |
| Calculated MW     | 50220                       |
| Antigen Region    | 128-157                     |

**HTR3C Antibody (Center) - Additional Information****Gene ID** 170572**Other Names**

5-hydroxytryptamine receptor 3C, 5-HT3-C, 5-HT3C, Serotonin receptor 3C, HTR3C

**Target/Specificity**

This HTR3C antibody is generated from rabbits immunized with a KLH conjugated synthetic peptide between 128-157 amino acids from the Central region of human HTR3C.

**Dilution**

WB~~1:1000

E~~Use at an assay dependent concentration.

**Format**

Purified polyclonal antibody supplied in PBS with 0.09% (W/V) sodium azide. This antibody is purified through a protein A column, followed by peptide affinity purification.

**Storage**

Maintain refrigerated at 2-8°C for up to 2 weeks. For long term storage store at -20°C in small aliquots to prevent freeze-thaw cycles.

**Precautions**

HTR3C Antibody (Center) is for research use only and not for use in diagnostic or therapeutic procedures.

**HTR3C Antibody (Center) - Protein Information****Name** HTR3C ([HGNC:24003](#))**Function** Forms serotonin (5-hydroxytryptamine/5-HT3)-activated cation- selective channel

complexes, which when activated cause fast, depolarizing responses in neurons.

#### **Cellular Location**

Postsynaptic cell membrane; Multi-pass membrane protein. Cell membrane; Multi-pass membrane protein. Note=Presumably retained within the endoplasmic reticulum unless complexed with HTR3A

#### **Tissue Location**

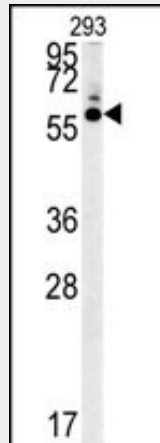
Expressed in many tissues including adult brain, colon, intestine, lung, muscle and stomach as well as fetal colon and kidney.

### **HTR3C Antibody (Center) - Protocols**

Provided below are standard protocols that you may find useful for product applications.

- [Western Blot](#)
- [Blocking Peptides](#)
- [Dot Blot](#)
- [Immunohistochemistry](#)
- [Immunofluorescence](#)
- [Immunoprecipitation](#)
- [Flow Cytometry](#)
- [Cell Culture](#)

### **HTR3C Antibody (Center) - Images**



HTR3C Antibody (Center) (Cat. #AP5973c) western blot analysis in 293 cell line lysates (35ug/lane). This demonstrates the HTR3C antibody detected the HTR3C protein (arrow).