

Anti-Cullin 1 Antibody
Rabbit polyclonal antibody to Cullin 1
Catalog # AP59742**Specification**

Anti-Cullin 1 Antibody - Product Information

Application	WB, IF/IC, IHC
Primary Accession	Q13616
Other Accession	Q9WTX6
Reactivity	Human, Mouse, Rat, Rabbit, Pig, Chicken, Bovine, Dog
Host	Rabbit
Clonality	Polyclonal
Calculated MW	89679

Anti-Cullin 1 Antibody - Additional Information**Gene ID** 8454**Other Names**

Cullin-1; CUL-1

Target/Specificity

KLH-conjugated synthetic peptide encompassing a sequence within the C-term region of human Cullin 1. The exact sequence is proprietary.

Dilution

WB~~WB (1/500 - 1/1000), IH (1/100 - 1/200), IF/IC (1/100 - 1/500)

IF/IC~~N/A

IHC~~1:100~500

Format

Liquid in 0.42% Potassium phosphate, 0.87% Sodium chloride, pH 7.3, 30% glycerol, and 0.09% (W/V) sodium azide.

Storage

Store at -20 °C. Stable for 12 months from date of receipt

Anti-Cullin 1 Antibody - Protein Information**Name** CUL1**Function**

Core component of multiple cullin-RING-based SCF (SKP1-CUL1- F-box protein) E3 ubiquitin-protein ligase complexes, which mediate the ubiquitination of proteins involved in cell cycle progression, signal transduction and transcription. SCF complexes and ARIH1 collaborate in tandem to mediate ubiquitination of target proteins (PubMed:22017875, PubMed:<a href="http://www.uniprot.org/citations/22017877"

target="_blank">22017877, PubMed:27565346). In the SCF complex, serves as a rigid scaffold that organizes the SKP1-F-box protein and RBX1 subunits. May contribute to catalysis through positioning of the substrate and the ubiquitin-conjugating enzyme (PubMed:38326650). The E3 ubiquitin- protein ligase activity of the complex is dependent on the neddylation of the cullin subunit and exchange of the substrate recognition component is mediated by TIP120A/CAND1 (PubMed:12609982, PubMed:38326650). The functional specificity of the SCF complex depends on the F-box protein as substrate recognition component (PubMed:38326650). SCF(BTRC) and SCF(FBXW11) direct ubiquitination of CTNNB1 and participate in Wnt signaling. SCF(FBXW11) directs ubiquitination of phosphorylated NFKBIA. SCF(BTRC) directs ubiquitination of NFKBIB, NFKBIE, ATF4, SMAD3, SMAD4, CDC25A, FBXO5 and probably NFKB2. SCF(BTRC) and/or SCF(FBXW11) direct ubiquitination of CEP68 (PubMed:25503564, PubMed:25704143). SCF(SKP2) directs ubiquitination of phosphorylated CDKN1B/p27kip and is involved in regulation of G1/S transition. SCF(SKP2) directs ubiquitination of ORC1, CDT1, RBL2, ELF4, CDKN1A, RAG2, FOXO1A, and probably MYC and TAL1. SCF(FBXW7) directs ubiquitination of CCNE1, NOTCH1 released notch intracellular domain (NICD), and probably PSEN1. SCF(FBXW2) directs ubiquitination of GCM1. SCF(FBXO32) directs ubiquitination of MYOD1. SCF(FBXO7) directs ubiquitination of BIRC2 and DLGAP5. SCF(FBXO33) directs ubiquitination of YBX1. SCF(FBXO1) directs ubiquitination of BCL6 and DTL but does not seem to direct ubiquitination of TP53. SCF(BTRC) mediates the ubiquitination of NFKBIA at 'Lys-21' and 'Lys- 22'; the degradation frees the associated NFKB1-RELA dimer to translocate into the nucleus and to activate transcription. SCF(CCNF) directs ubiquitination of CCP110. SCF(FBXL3) and SCF(FBXL21) direct ubiquitination of CRY1 and CRY2. SCF(FBXO9) directs ubiquitination of TTI1 and TELO2. SCF(FBXO10) directs ubiquitination of BCL2. Neddylated CUL1-RBX1 ubiquitinates p53/TP53 recruited by Cul7-RING(FBXW8) complex (PubMed:35982156). SCF(BTRC) directs 'Lys-48'-linked ubiquitination of UBR2 in the T-cell receptor signaling pathway (PubMed:38225265). The SCF(FBXO31) protein ligase complex specifically mediates the ubiquitination of proteins amidated at their C-terminus in response to oxidative stress (PubMed:39880951).

Tissue Location

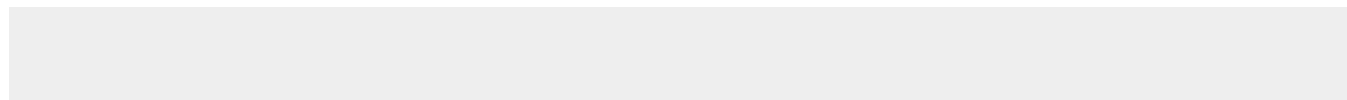
Expressed in lung fibroblasts.

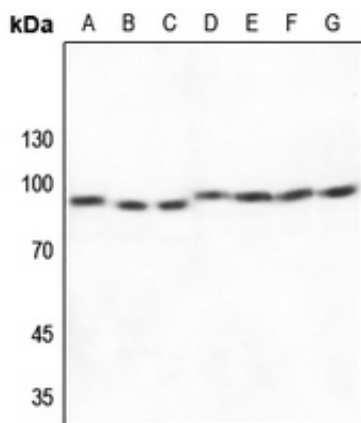
Anti-Cullin 1 Antibody - Protocols

Provided below are standard protocols that you may find useful for product applications.

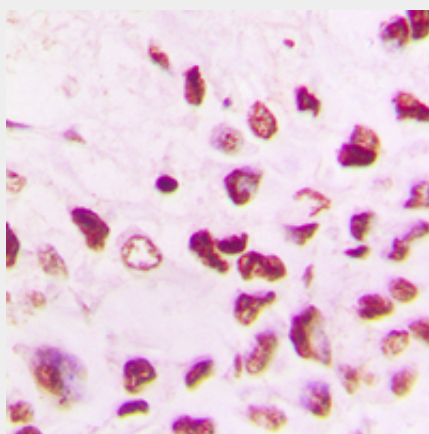
- [Western Blot](#)
- [Blocking Peptides](#)
- [Dot Blot](#)
- [Immunohistochemistry](#)
- [Immunofluorescence](#)
- [Immunoprecipitation](#)
- [Flow Cytometry](#)
- [Cell Culture](#)

Anti-Cullin 1 Antibody - Images

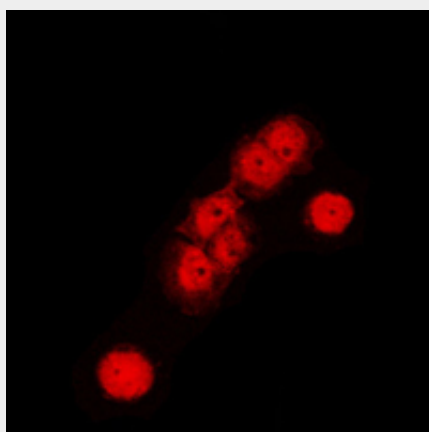




Western blot analysis of Cullin 1 expression in HEK293T (A), HeLa (B), A549 (C), mouse lung (D), mouse testis (E), rat lung (F), rat testis (G) whole cell lysates.



Immunohistochemical analysis of Cullin 1 staining in human lung cancer formalin fixed paraffin embedded tissue section. The section was pre-treated using heat mediated antigen retrieval with sodium citrate buffer (pH 6.0). The section was then incubated with the antibody at room temperature and detected using an HRP conjugated compact polymer system. DAB was used as the chromogen. The section was then counterstained with haematoxylin and mounted with DPX.



Immunofluorescent analysis of Cullin 1 staining in HeLa cells. Formalin-fixed cells were permeabilized with 0.1% Triton X-100 in TBS for 5-10 minutes and blocked with 3% BSA-PBS for 30 minutes at room temperature. Cells were probed with the primary antibody in 3% BSA-PBS and incubated overnight at 4 °C in a humidified chamber. Cells were washed with PBST and incubated with a DyLight 594-conjugated secondary antibody (red) in PBS at room temperature in the dark.

Anti-Cullin 1 Antibody - Background

KLH-conjugated synthetic peptide encompassing a sequence within the C-term region of human Cullin 1. The exact sequence is proprietary.